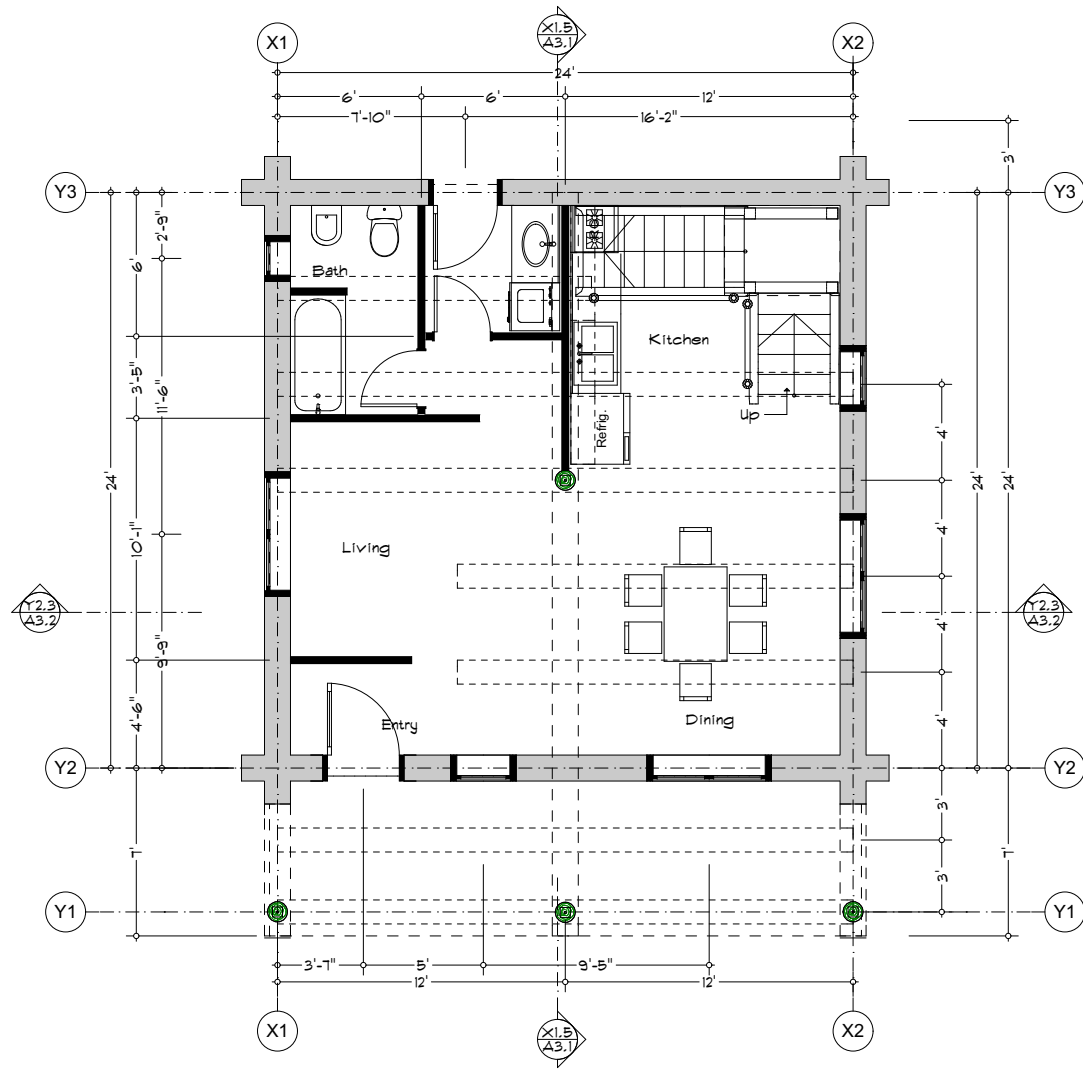


7/10/2013

Prelim 8.5 x 11"



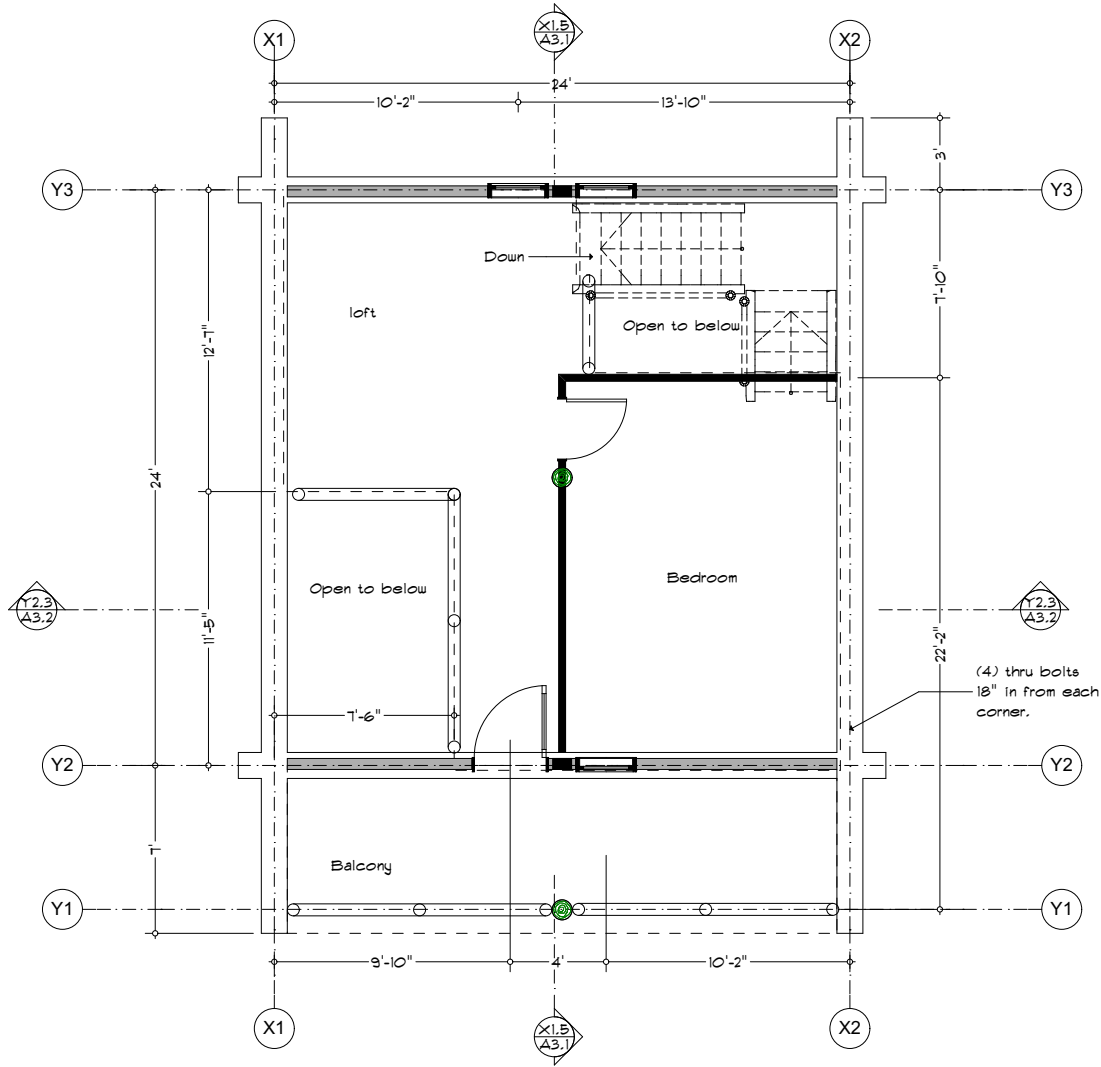
Lake Country Log Homes  
 Main Floor Plan

**Main Floor Plan**  
 SCALE: 1/8" = 1'-0"

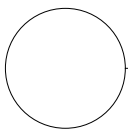
1/8" = 1'-0"

7/10/2013

Prelim 8.5 x 11"



Lake Country Log Homes  
 Upper Floor Plan



Upper Prelim

SCALE: 1/8" = 1'-0"

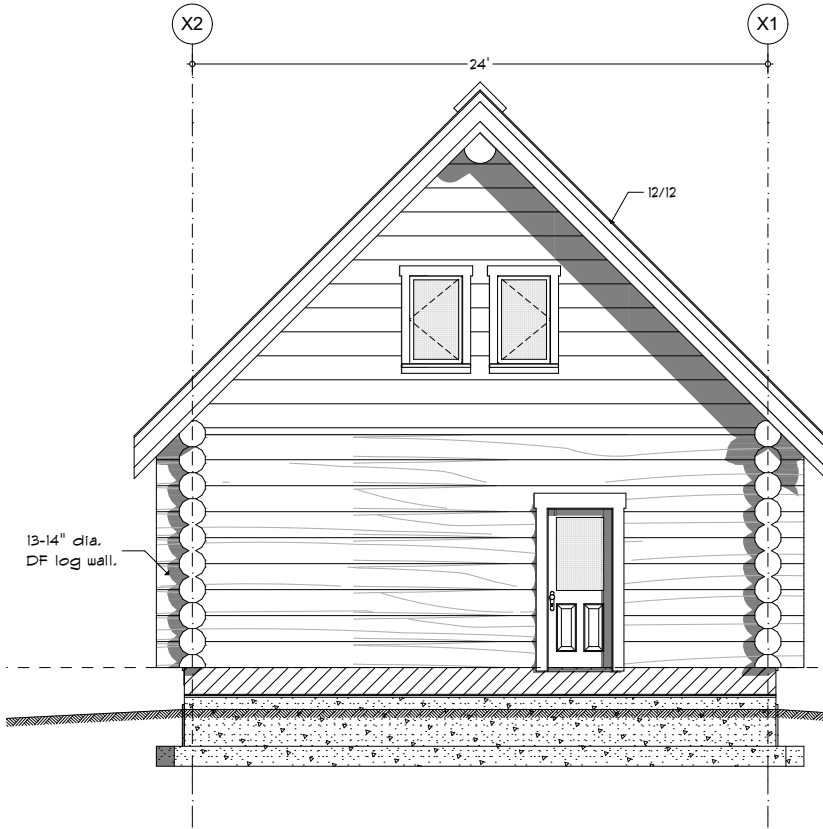
1/8" = 1'-0"

10

7/10/2013

Prelim 8.5 x 11"

Lake Country Log Homes  
 North & South Elevation

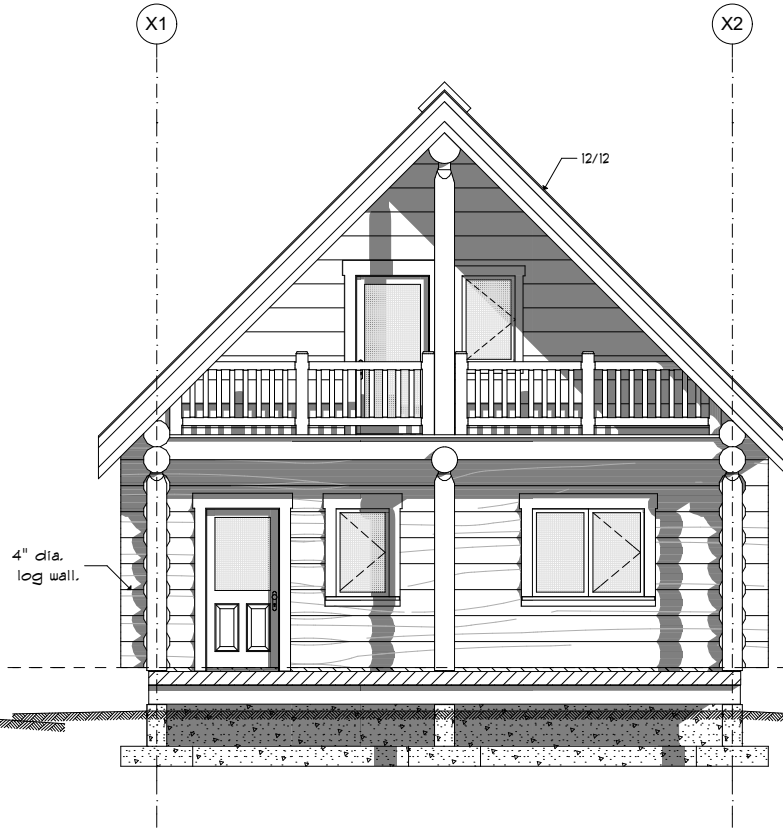


13-14" dia.  
 DF log wall.



**South Elevaton**

SCALE: 1/8" = 1'-0"



4" dia.  
 log wall.



**North Elevation**

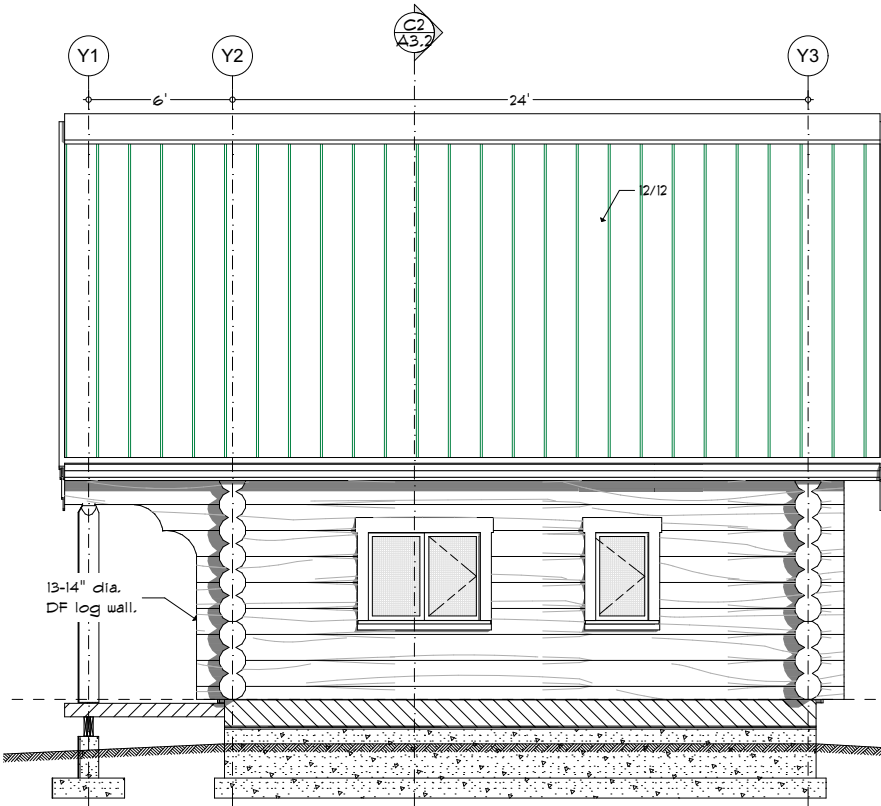
SCALE: 1/8" = 1'-0"

1/8" = 1'-0"

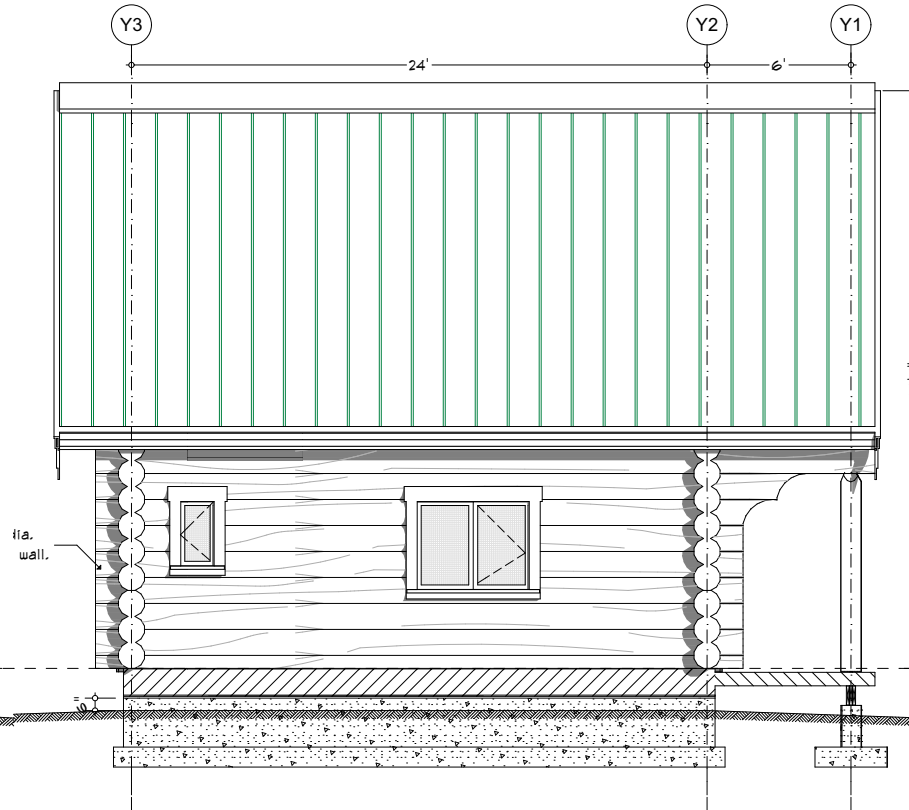
7/10/2013

Prelim 8.5x11"

Lake Country Log Homes  
 West & East Elevation



**W** West Elevation  
 SCALE: 1/8" = 1'-0"



**E** East Elevation  
 SCALE: 1/8" = 1'-0"

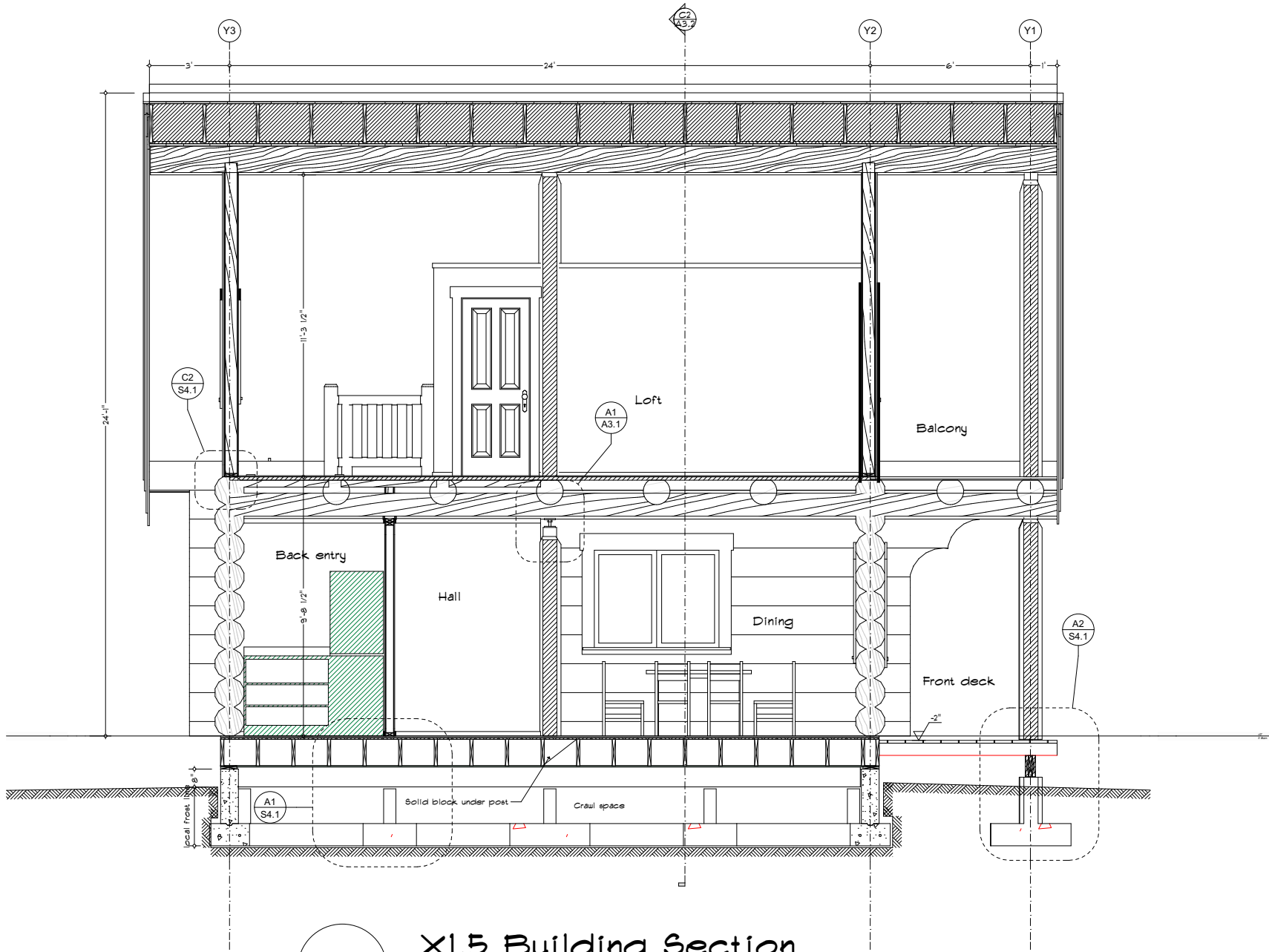
1/8" = 1'-0"

7/10/2013

Prelim 8.5 x 11"

Lake Country Log Homes

Sections



X1.5

X1.5 Building Section  
 SCALE: 3/16" = 1'-0"

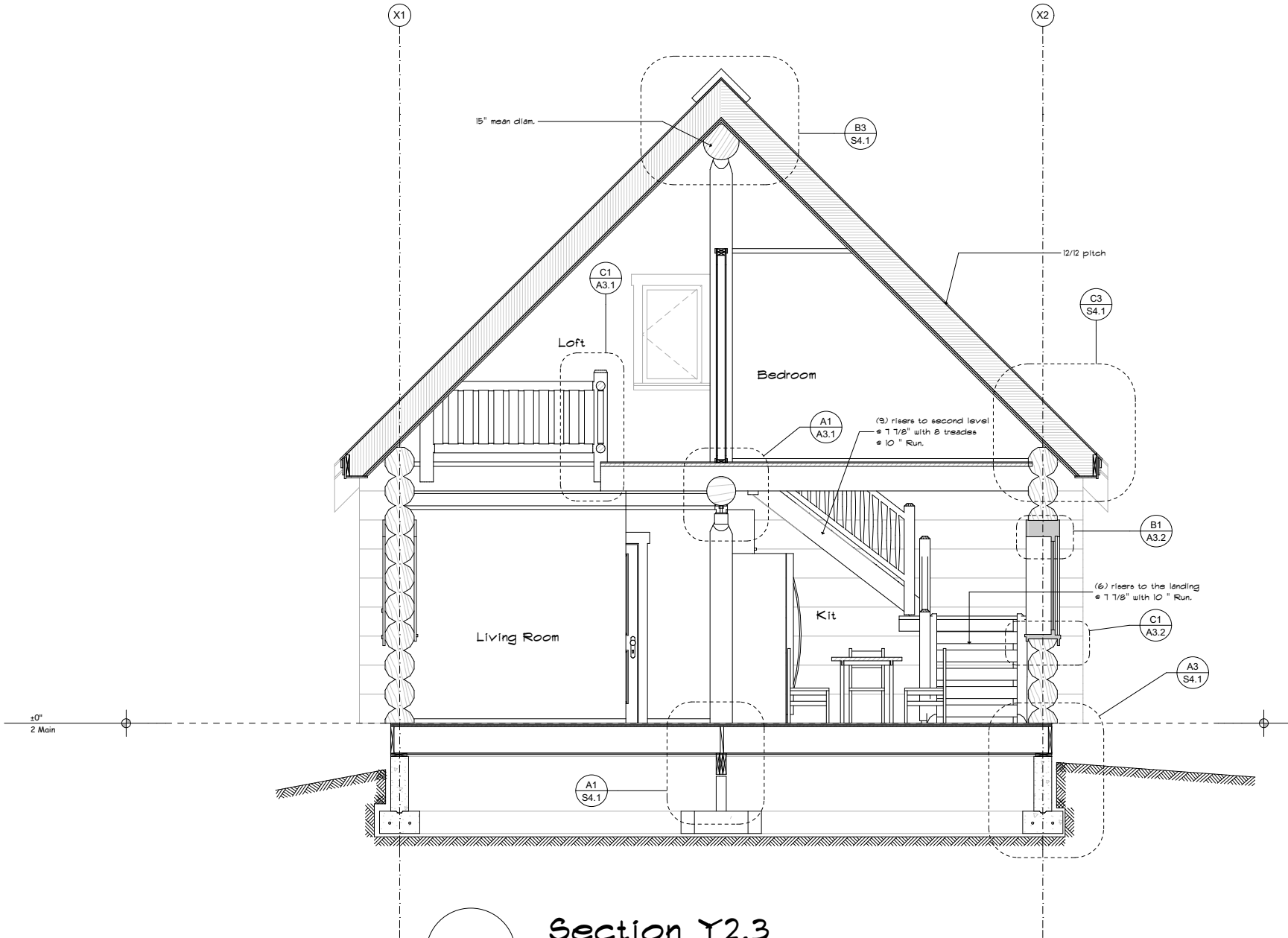
3/16" = 1'-0"  
 13

7/10/2013

Prelim 8.5x11"

Lake Country Log Homes

Sections



**Y2.3** Section Y2.3  
 SCALE: 3/16" = 1'-0"

3/16" = 1'-0"