



PO Box 295
Salmon Arm, British Columbia,
Canada V1E 4N3
Web: www.lakecountrylog.com
Phone: 250-836-3854
Fax: 250-836-3874



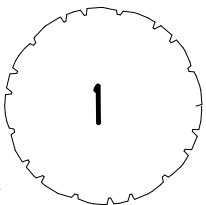
Stock Plans

COPYRIGHT © 2020
THIS DOCUMENT IS PROPERTY OF
LAKE COUNTRY LOG HOMES 2009 LTD.
REPRODUCTION OF ALL OR
ANY PORTION OF THIS DOCUMENT
WITHOUT WRITTEN PERMISSION
IS ILLEGAL AND PUNISHABLE BY LAW.

SCALED TO PRINT ON 8 1/2" X 11"

BLUE RIDGE

PERSPECTIVE VIEW





SCALED TO PRINT ON 8 1/2" X 11"

PO Box 295
Salmon Arm, British Columbia,
Canada V1E 4N3
Web: www.lakecountrylog.com
Phone: 250-836-3854
Fax: 250-836-3874

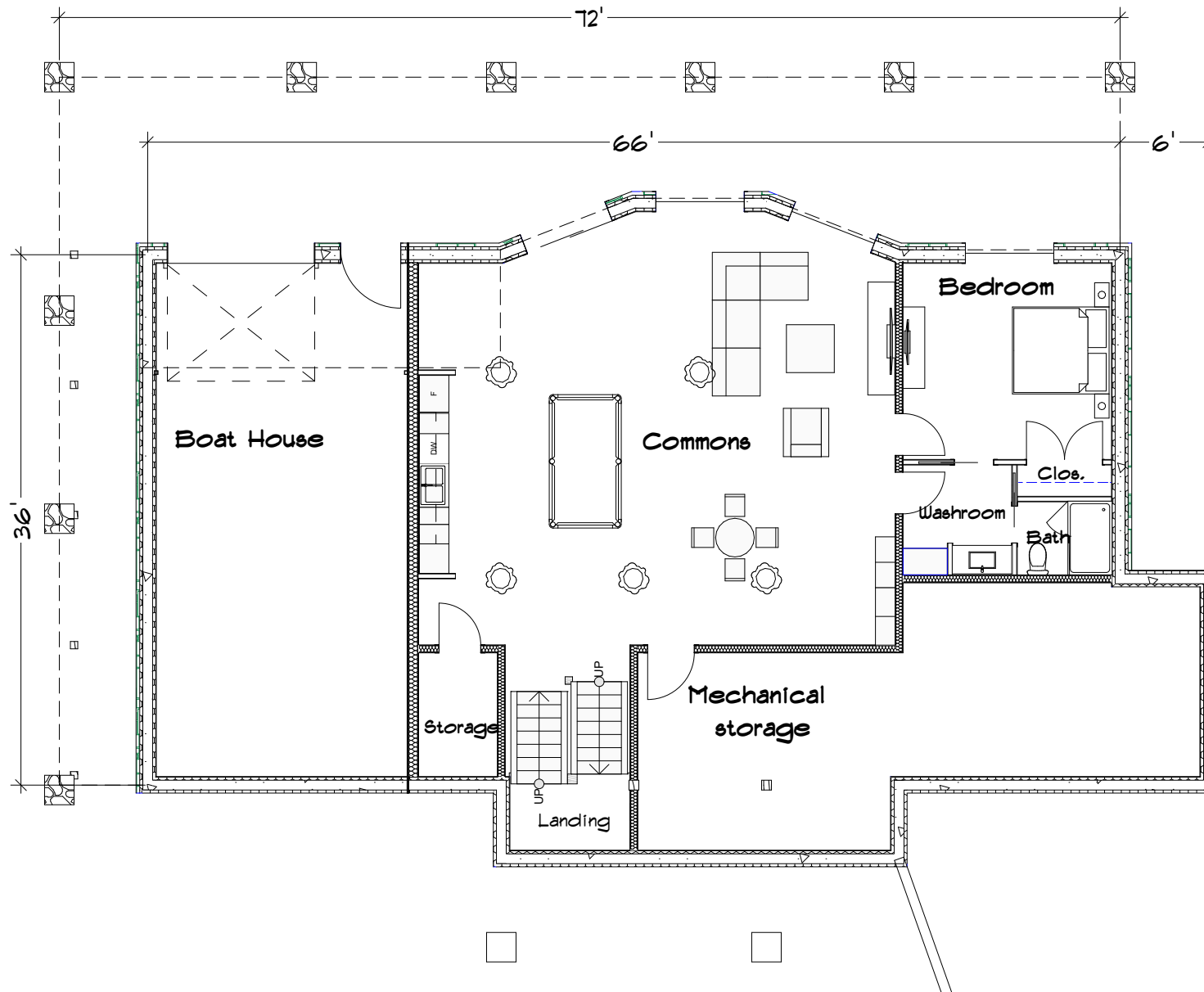


Stock Plans

COPYRIGHT © 2020
THIS DOCUMENT IS PROPERTY OF
LAKE COUNTRY LOG HOMES 2009 LTD.
REPRODUCTION OF ALL OR
ANY PORTION OF THIS DOCUMENT
WITHOUT WRITTEN PERMISSION
IS ILLEGAL AND PUNISHABLE BY LAW.

BLUE RIDGE PERSPECTIVE VIEW

2



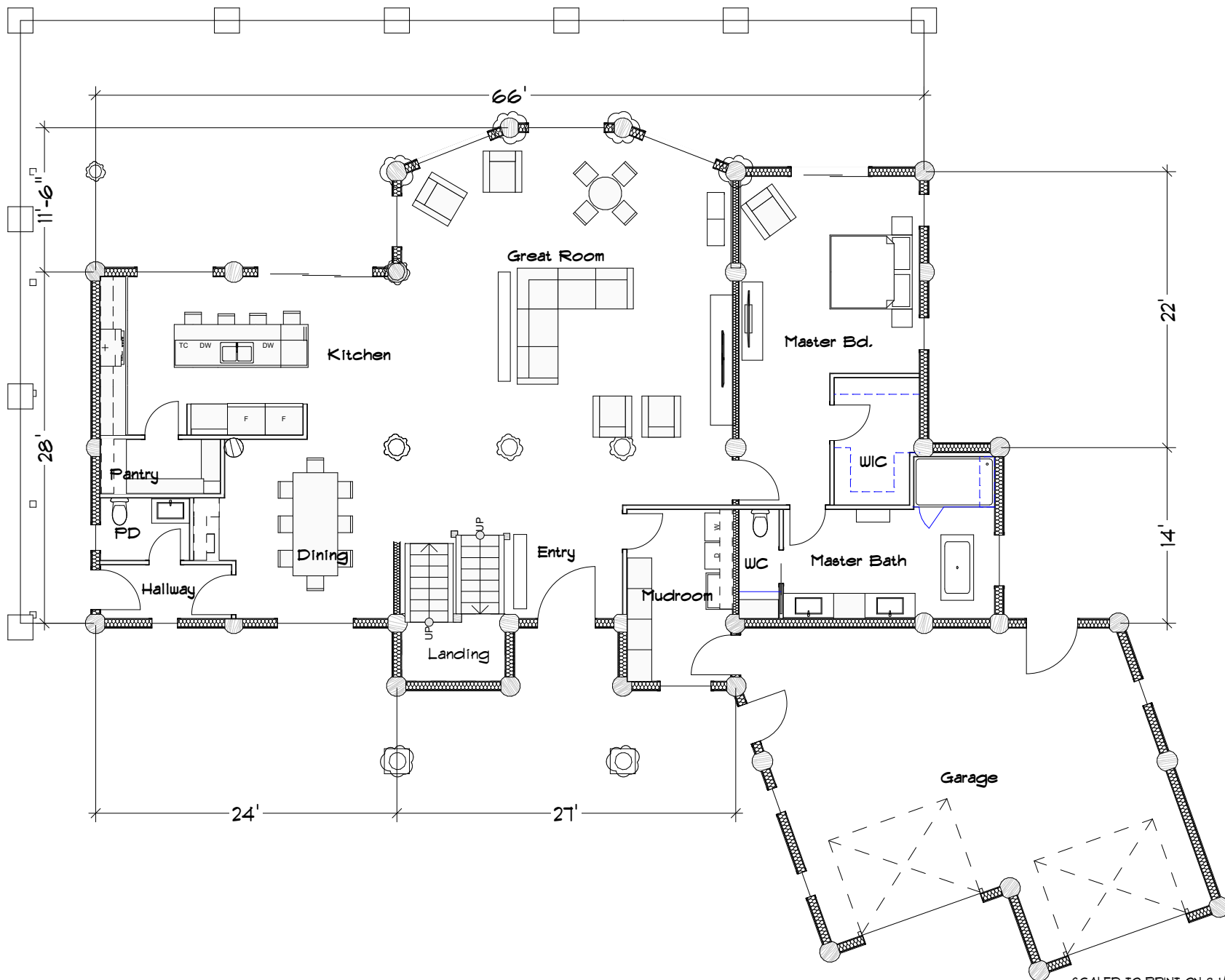
PO Box 295
 Salmon Arm, British Columbia,
 Canada V1E 4N3
 Web: www.lakecountrylog.com
 Phone: 250-836-3854
 Fax: 250-836-3874



Stock Plans

COPYRIGHT © 2020
 THIS DOCUMENT IS PROPERTY OF
 LAKE COUNTRY LOG HOMES 2009 LTD.
 REPRODUCTION OF ALL OR
 ANY PORTION OF THIS DOCUMENT
 WITHOUT WRITTEN PERMISSION
 IS ILLEGAL AND PUNISHABLE BY LAW.

BLUE RIDGE BASEMENT FLOOR



SCALED TO PRINT ON 8 1/2" X 11"

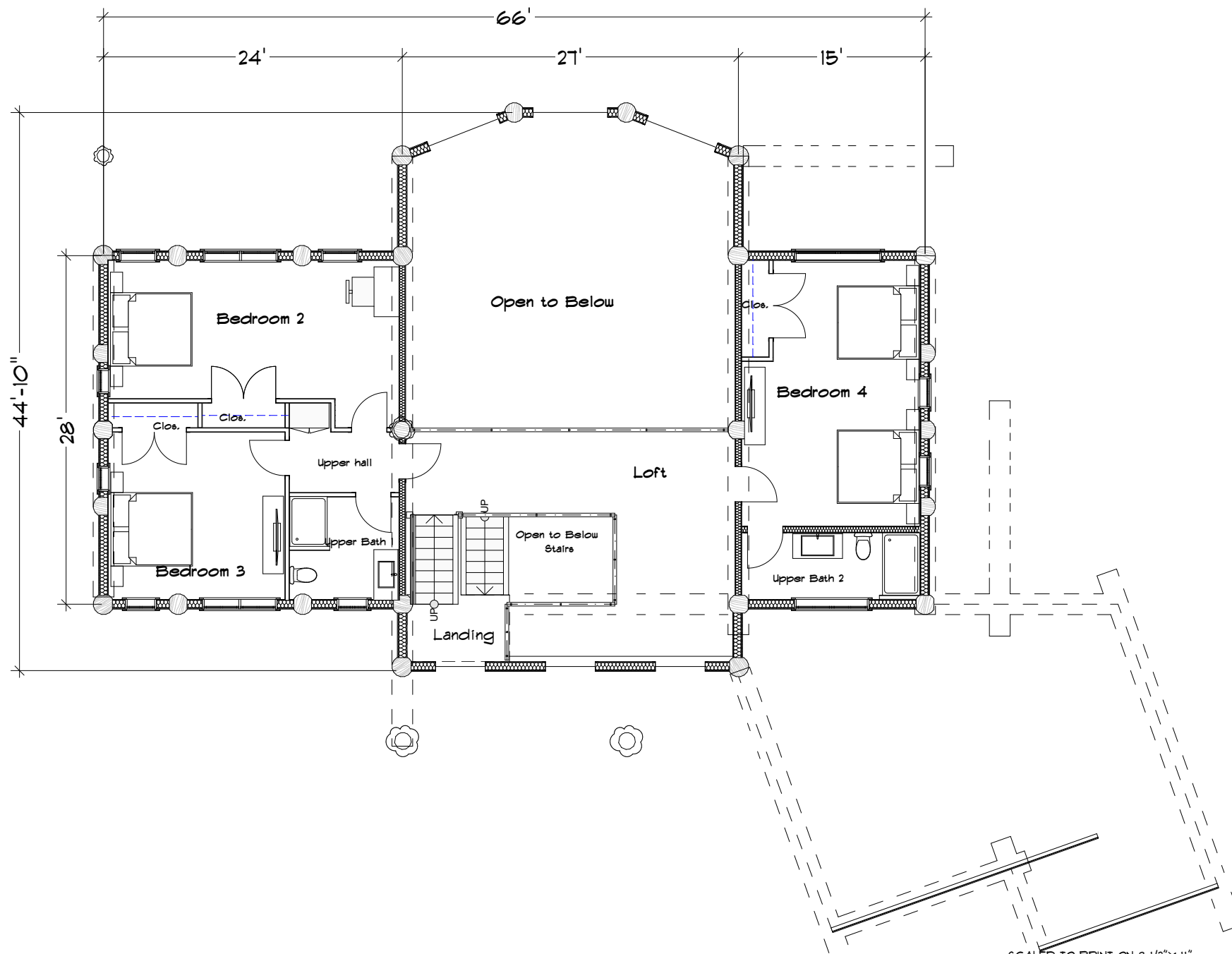
PO Box 295
Salmon Arm, British Columbia,
Canada V1E 4N3
Web: www.lakecountrylog.com
Phone: 250-836-3854
Fax: 250-836-3874



Stock Plans

COPYRIGHT © 2020
THIS DOCUMENT IS PROPERTY OF
LAKE COUNTRY LOG HOMES 2009 LTD.
REPRODUCTION OF ALL OR
ANY PORTION OF THIS DOCUMENT
WITHOUT WRITTEN PERMISSION
IS ILLEGAL AND PUNISHABLE BY LAW.

BLUE RIDGE MAIN FLOOR



PO Box 295
 Salmon Arm, British Columbia,
 Canada V1E 4N3
 Web: www.lakecountrylog.com
 Phone: 250-836-3854
 Fax: 250-836-3874



Stock Plans

COPYRIGHT © 2020
 THIS DOCUMENT IS PROPERTY OF
 LAKE COUNTRY LOG HOMES 2009 LTD.
 REPRODUCTION OF ALL OR
 ANY PORTION OF THIS DOCUMENT
 WITHOUT WRITTEN PERMISSION
 IS ILLEGAL AND PUNISHABLE BY LAW.

BLUE RIDGE UPPER FLOOR

5



West



South

SCALED TO PRINT ON 8 1/2" X 11"

PO Box 295
Salmon Arm, British Columbia,
Canada V1E 4N3
Web: www.lakecountrylog.com
Phone: 250-836-3854
Fax: 250-836-3874

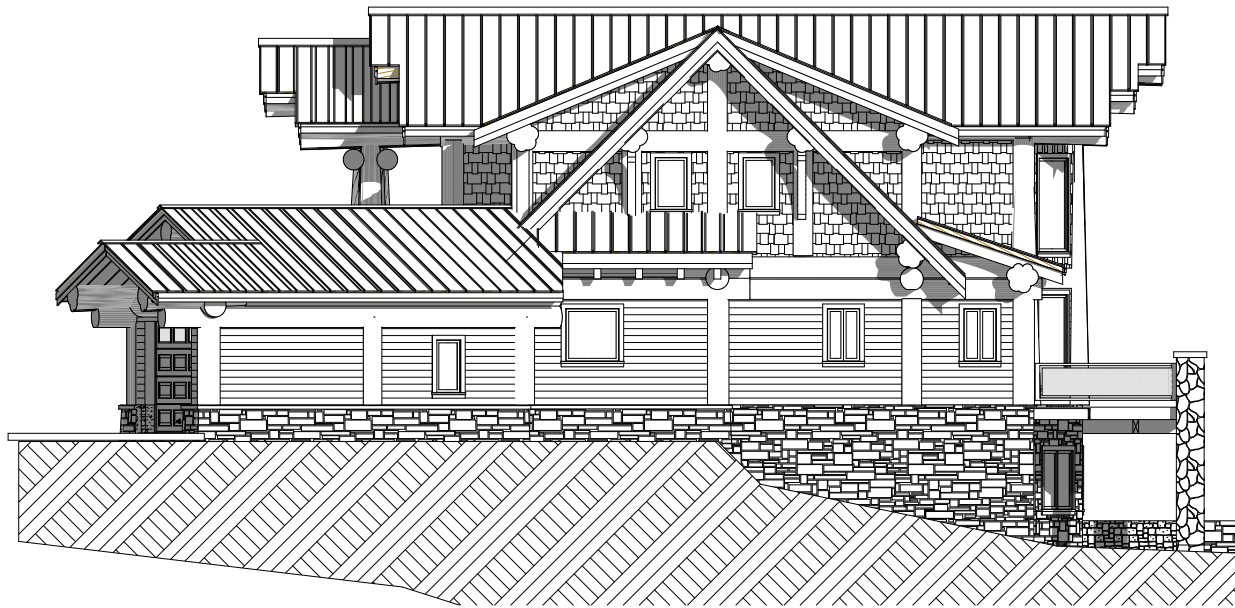


Stock Plans

COPYRIGHT © 2020
THIS DOCUMENT IS PROPERTY OF
LAKE COUNTRY LOG HOMES 2009 LTD.
REPRODUCTION OF ALL OR
ANY PORTION OF THIS DOCUMENT
WITHOUT WRITTEN PERMISSION
IS ILLEGAL AND PUNISHABLE BY LAW.

BLUE RIDGE ELEVATIONS

North



East

PO Box 295
Salmon Arm, British Columbia,
Canada V1E 4N3
Web: www.lakecountrylog.com
Phone: 250-836-3854
Fax: 250-836-3874



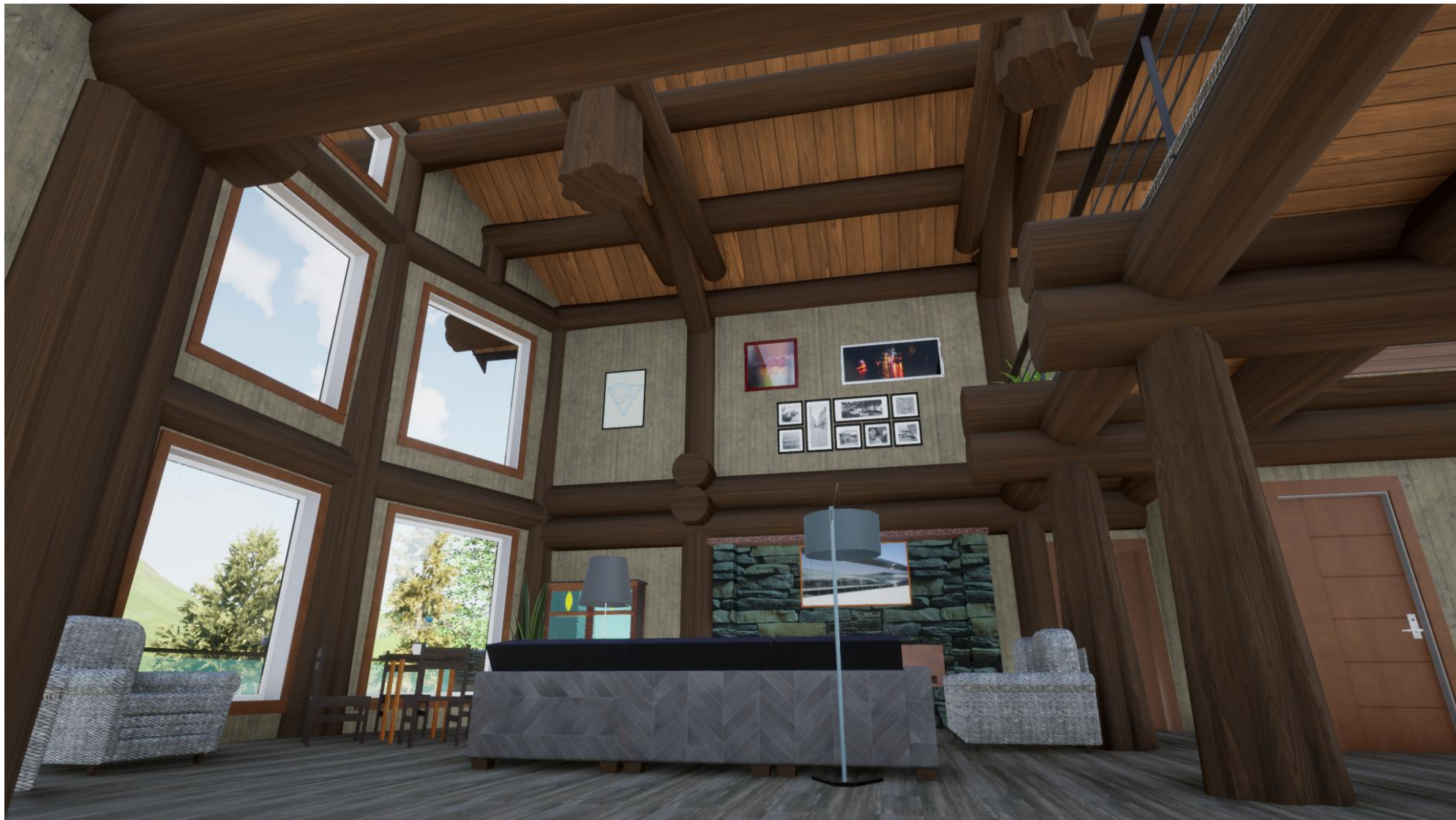
Stock Plans

COPYRIGHT © 2020
THIS DOCUMENT IS PROPERTY OF
LAKE COUNTRY LOG HOMES 2009 LTD.
REPRODUCTION OF ALL OR
ANY PORTION OF THIS DOCUMENT
WITHOUT WRITTEN PERMISSION
IS ILLEGAL AND PUNISHABLE BY LAW.

BLUE RIDGE
ELEVATIONS

SCALED TO PRINT ON 8 1/2" X 11"

7



PO Box 295
Salmon Arm, British Columbia,
Canada V1E 4N3
Web: www.lakecountrylog.com
Phone: 250-836-3854
Fax: 250-836-3874



Stock Plans

COPYRIGHT © 2020
THIS DOCUMENT IS PROPERTY OF
LAKE COUNTRY LOG HOMES 2009 LTD.
REPRODUCTION OF ALL OR
ANY PORTION OF THIS DOCUMENT
WITHOUT WRITTEN PERMISSION
IS ILLEGAL AND PUNISHABLE BY LAW.

BLUE RIDGE

INTERIOR VIEW

SCALED TO PRINT ON 8 1/2" X 11"



PO Box 295
Salmon Arm, British Columbia,
Canada V1E 4N3
Web: www.lakecountrylog.com
Phone: 250-836-3854
Fax: 250-836-3874



Stock Plans

COPYRIGHT © 2020
THIS DOCUMENT IS PROPERTY OF
LAKE COUNTRY LOG HOMES 2009 LTD.
REPRODUCTION OF ALL OR
ANY PORTION OF THIS DOCUMENT
WITHOUT WRITTEN PERMISSION
IS ILLEGAL AND PUNISHABLE BY LAW.

BLUE RIDGE

INTERIOR VIEW

SCALED TO PRINT ON 8 1/2" X 11"