

Crawford Bay



PO Box 295
Salmon Arm, British Columbia,
Canada V1E 4N3
Web: www.lakecountrylog.com
Phone: 250-836-3854
Fax: 250-836-3874



Stock Plans

COPYRIGHT © 2020
THIS DOCUMENT IS PROPERTY OF
LAKE COUNTRY LOG HOMES 2009 LTD.
REPRODUCTION OF ALL OR
ANY PORTION OF THIS DOCUMENT
WITHOUT WRITTEN PERMISSION
IS ILLEGAL AND PUNISHABLE BY LAW.

CRAWFORD BAY RENDERING

SCALED TO PRINT ON 8 1/2" X 11"

A1

Crawford Bay



SCALED TO PRINT ON 8 1/2" X 11"

PO Box 295
Salmon Arm, British Columbia,
Canada V1E 4N3
Web: www.lakecountrylog.com
Phone: 250-836-3854
Fax: 250-836-3874



Stock Plans

COPYRIGHT © 2020
THIS DOCUMENT IS PROPERTY OF
LAKE COUNTRY LOG HOMES 2009 LTD.
REPRODUCTION OF ALL OR
ANY PORTION OF THIS DOCUMENT
WITHOUT WRITTEN PERMISSION
IS ILLEGAL AND PUNISHABLE BY LAW.

CRAWFORD BAY LIVING ROOM

A2

Crawford Bay



SCALED TO PRINT ON 8 1/2" X 11"

PO Box 295
Salmon Arm, British Columbia,
Canada V1E 4N3
Web: www.lakecountrylog.com
Phone: 250-836-3854
Fax: 250-836-3874

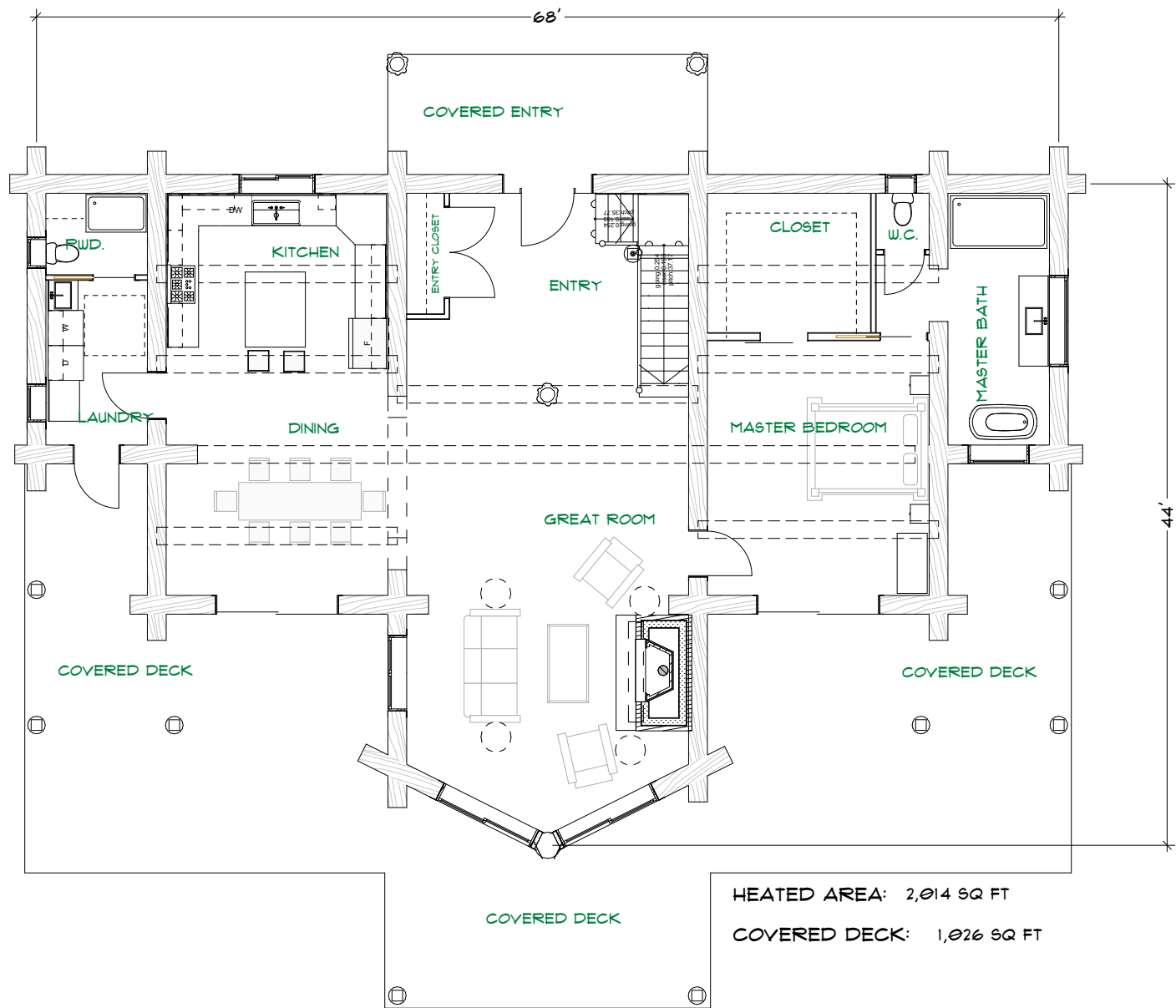


Stock Plans

COPYRIGHT © 2020
THIS DOCUMENT IS PROPERTY OF
LAKE COUNTRY LOG HOMES 2009 LTD.
REPRODUCTION OF ALL OR
ANY PORTION OF THIS DOCUMENT
WITHOUT WRITTEN PERMISSION
IS ILLEGAL AND PUNISHABLE BY LAW.

CRAWFORD BAY
KITCHEN DINING

A3



SCALED TO PRINT ON 8 1/2" X 11"

PO Box 295
Salmon Arm, British Columbia,
Canada V1E 4N3
Web: www.lakecountrylog.com
Phone: 250-836-3854
Fax: 250-836-3874



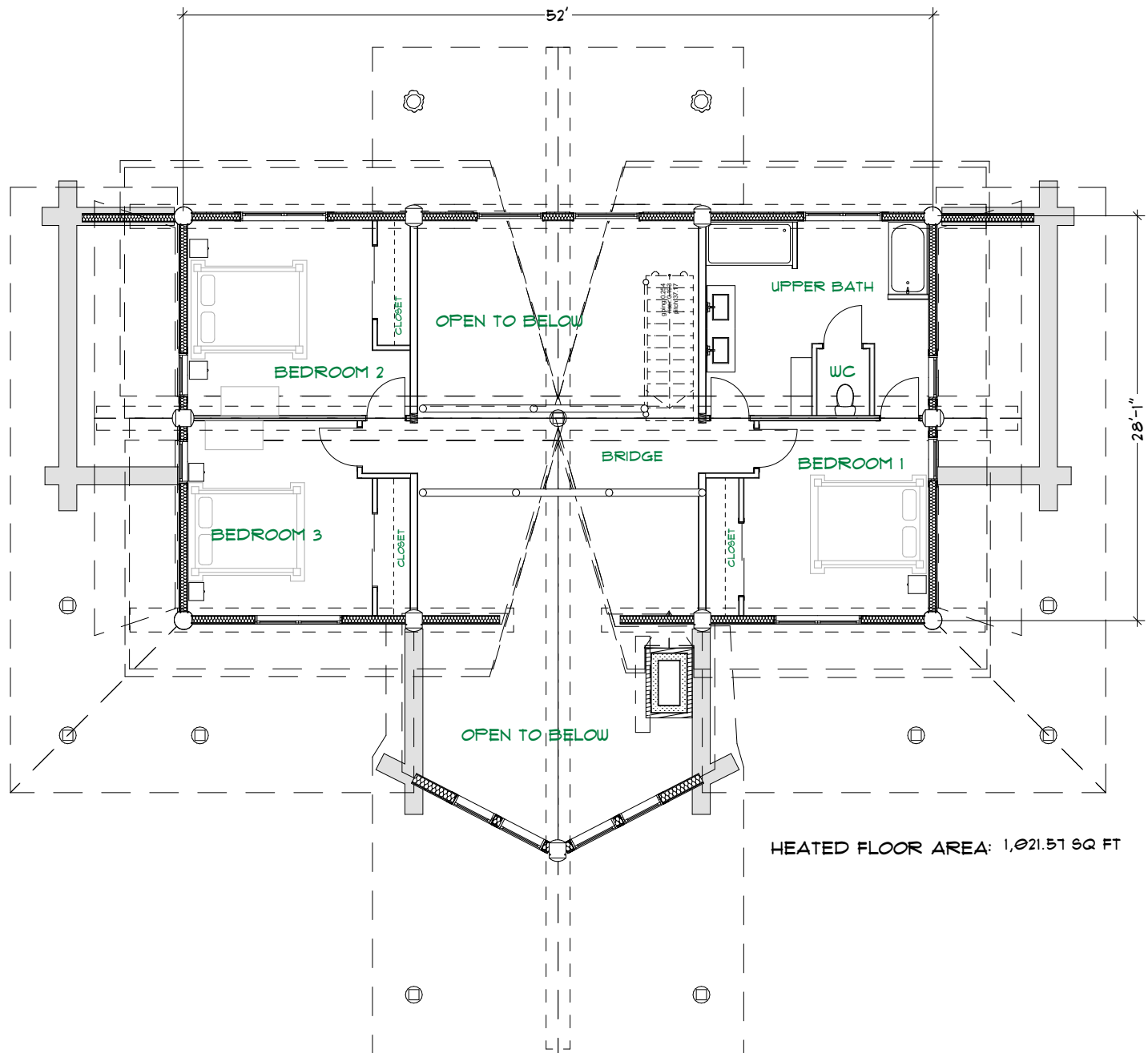
Stock Plans

COPYRIGHT © 2020
THIS DOCUMENT IS PROPERTY OF
LAKE COUNTRY LOG HOMES 2009 LTD.
REPRODUCTION OF ALL OR
ANY PORTION OF THIS DOCUMENT
WITHOUT WRITTEN PERMISSION
IS ILLEGAL AND PUNISHABLE BY LAW.

CRAWFORD BAY

MAIN FLOOR PLAN

A4



SCALED TO PRINT ON 8 1/2" X 11"

PO Box 295
Salmon Arm, British Columbia,
Canada V1E 4N3
Web: www.lakecountrylog.com
Phone: 250-836-3854
Fax: 250-836-3874



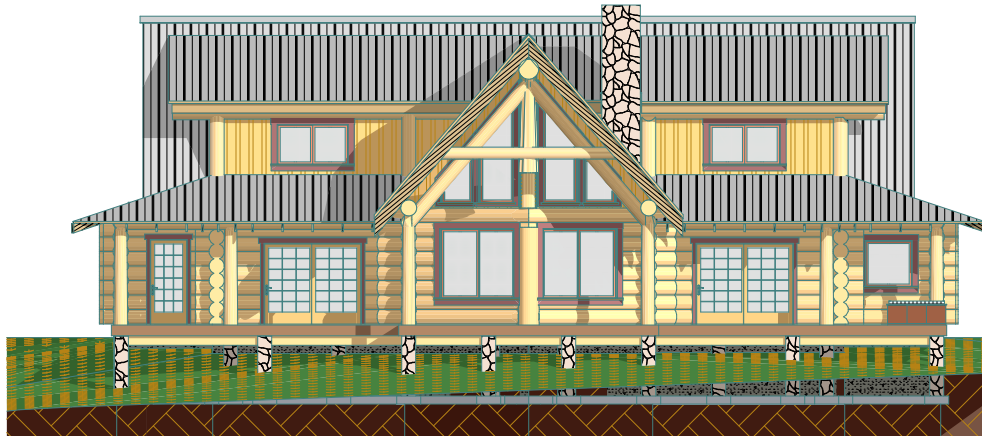
Stock Plans

COPYRIGHT © 2020
THIS DOCUMENT IS PROPERTY OF
LAKE COUNTRY LOG HOMES 2009 LTD.
REPRODUCTION OF ALL OR
ANY PORTION OF THIS DOCUMENT
WITHOUT WRITTEN PERMISSION
IS ILLEGAL AND PUNISHABLE BY LAW.

CRAWFORD BAY

UPPER FLOOR PLAN

A5



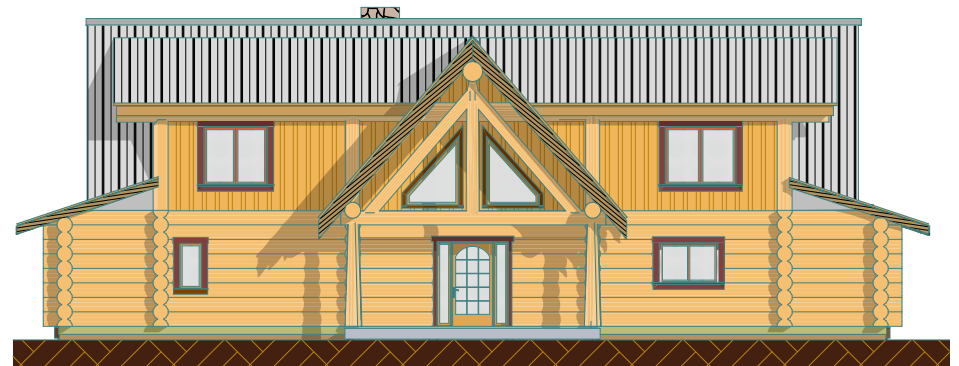
West



North



South



East

PO Box 295
Salmon Arm, British Columbia,
Canada V1E 4N3
Web: www.lakecountrylog.com
Phone: 250-836-3854
Fax: 250-836-3874



Stock Plans

COPYRIGHT © 2020
THIS DOCUMENT IS PROPERTY OF
LAKE COUNTRY LOG HOMES 2009 LTD.
REPRODUCTION OF ALL OR
ANY PORTION OF THIS DOCUMENT
WITHOUT WRITTEN PERMISSION
IS ILLEGAL AND PUNISHABLE BY LAW.

CRAWFORD BAY ELEVATIONS

SCALED TO PRINT ON 8 1/2" X 11"

A6