



SCALED TO PRINT ON 8 1/2" X 11"

PO Box 295
Salmon Arm, British Columbia,
Canada V1E 4N3
Web: www.lakecountrylog.com
Phone: 250-836-3854
Fax: 250-836-3874

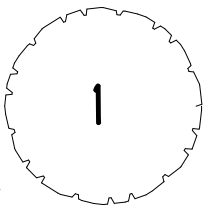


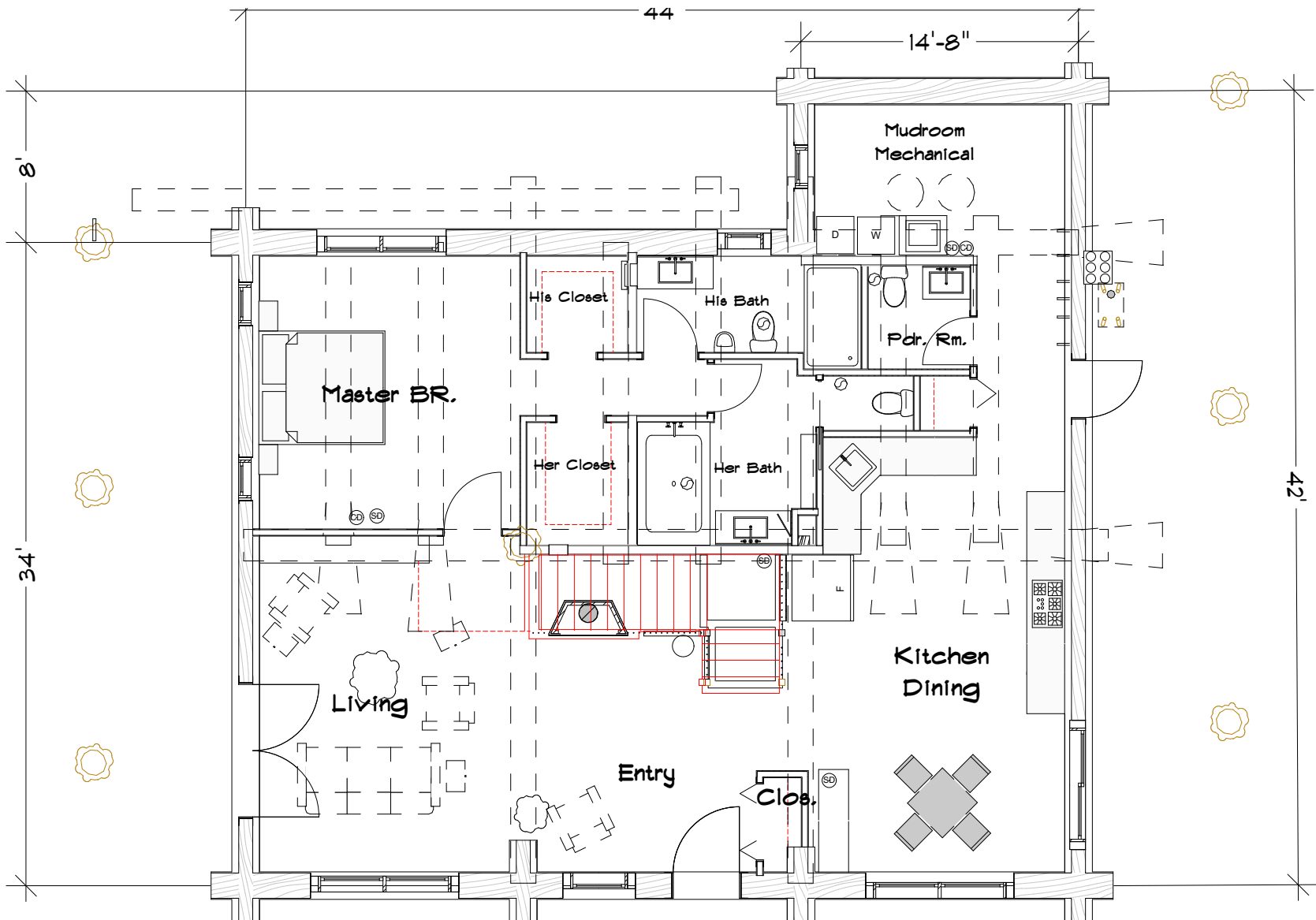
Portfolio 8x11

COPYRIGHT © 2020
THIS DOCUMENT IS PROPERTY OF
LAKE COUNTRY LOG HOMES 2009 LTD.
REPRODUCTION OF ALL OR
ANY PORTION OF THIS DOCUMENT
WITHOUT WRITTEN PERMISSION
IS ILLEGAL AND PUNISHABLE BY LAW.

ELK CREEK

PERSPECTIVE 1





Covered Porch
1,349 SF

Heated Area
1,613 sq ft

SCALED TO PRINT ON 8 1/2" X 11"

PO Box 295
Salmon Arm, British Columbia,
Canada V1E 4N3
Web: www.lakecountrylog.com
Phone: 250-836-3854
Fax: 250-836-3874

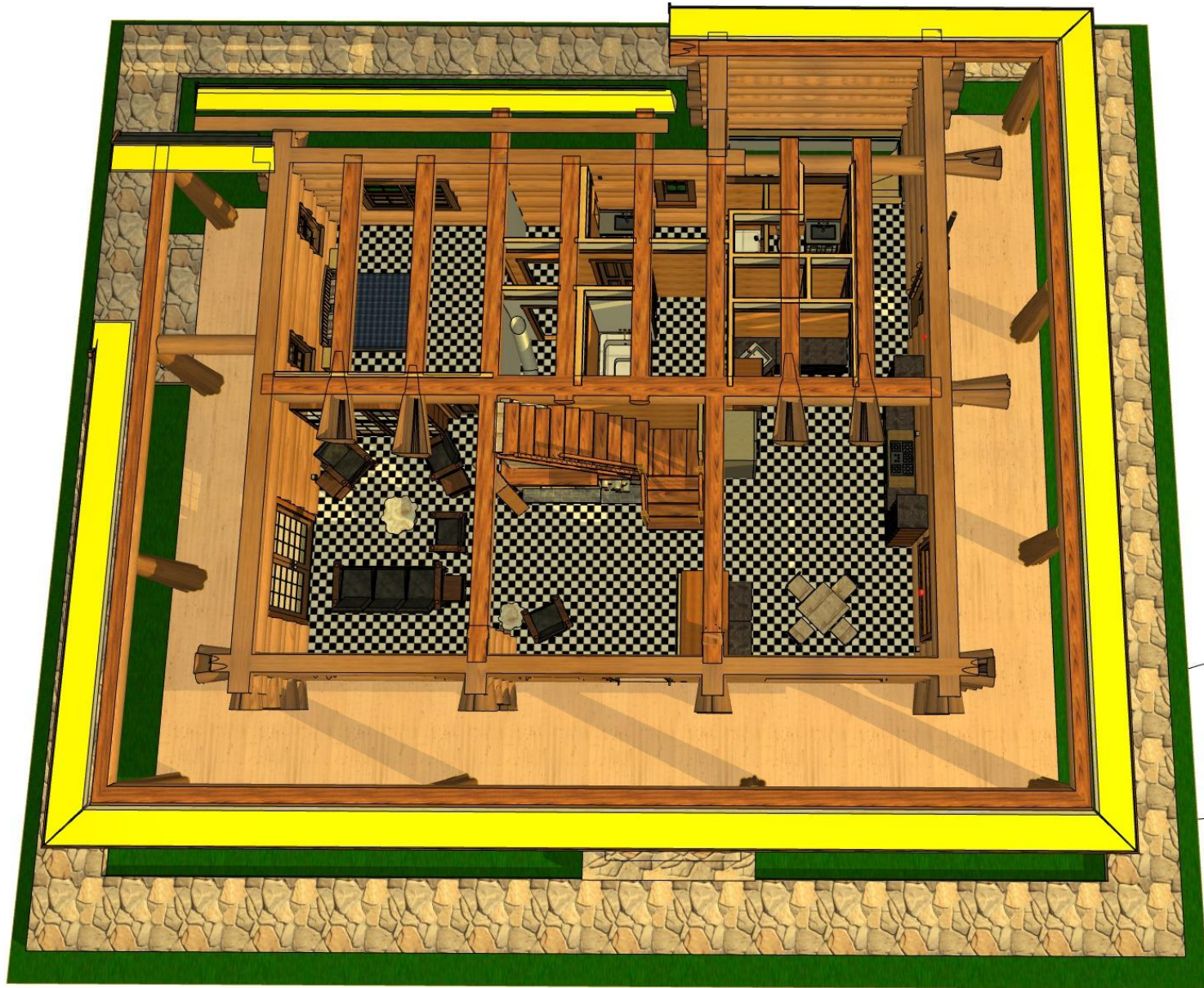


Portfolio 8x11

COPYRIGHT © 2020
THIS DOCUMENT IS PROPERTY OF
LAKE COUNTRY LOG HOMES 2009 LTD.
REPRODUCTION OF ALL OR
ANY PORTION OF THIS DOCUMENT
WITHOUT WRITTEN PERMISSION
IS ILLEGAL AND PUNISHABLE BY LAW.

ELK CREEK
MAIN FLOOR PLAN

2



SCALED TO PRINT ON 8 1/2" X 11"

PO Box 295
Salmon Arm, British Columbia,
Canada V1E 4N3
Web: www.lakecountrylog.com
Phone: 250-836-3854
Fax: 250-836-3874



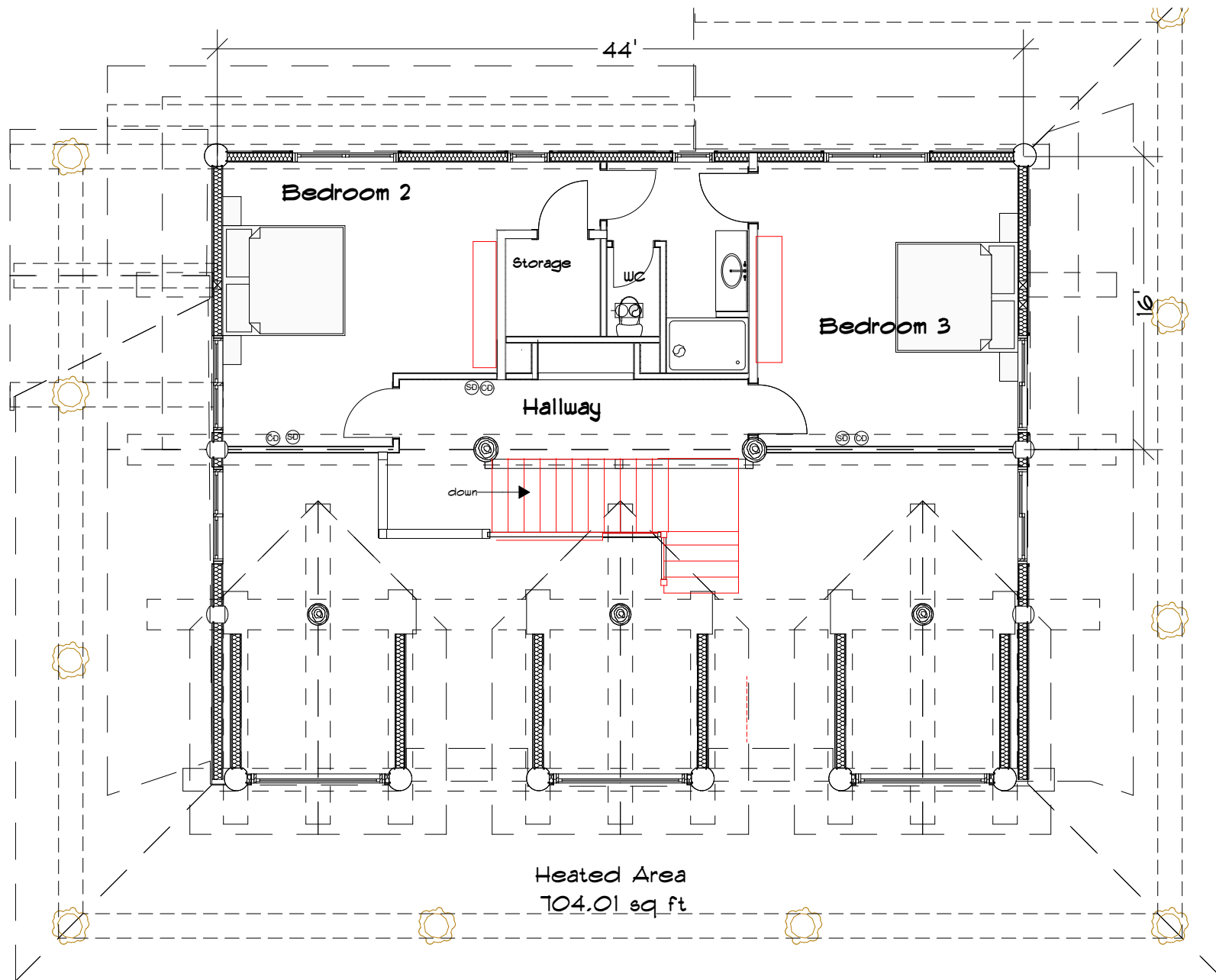
Portfolio 8x11

COPYRIGHT © 2020
THIS DOCUMENT IS PROPERTY OF
LAKE COUNTRY LOG HOMES 2009 LTD.
REPRODUCTION OF ALL OR
ANY PORTION OF THIS DOCUMENT
WITHOUT WRITTEN PERMISSION
IS ILLEGAL AND PUNISHABLE BY LAW.

ELK CREEK

MAIN FLOOR PLAN 3D

3



SCALED TO PRINT ON 8 1/2" x 11"

PO Box 295
Salmon Arm, British Columbia,
Canada V1E 4N3
Web: www.lakecountrylog.com
Phone: 250-836-3854
Fax: 250-836-3874

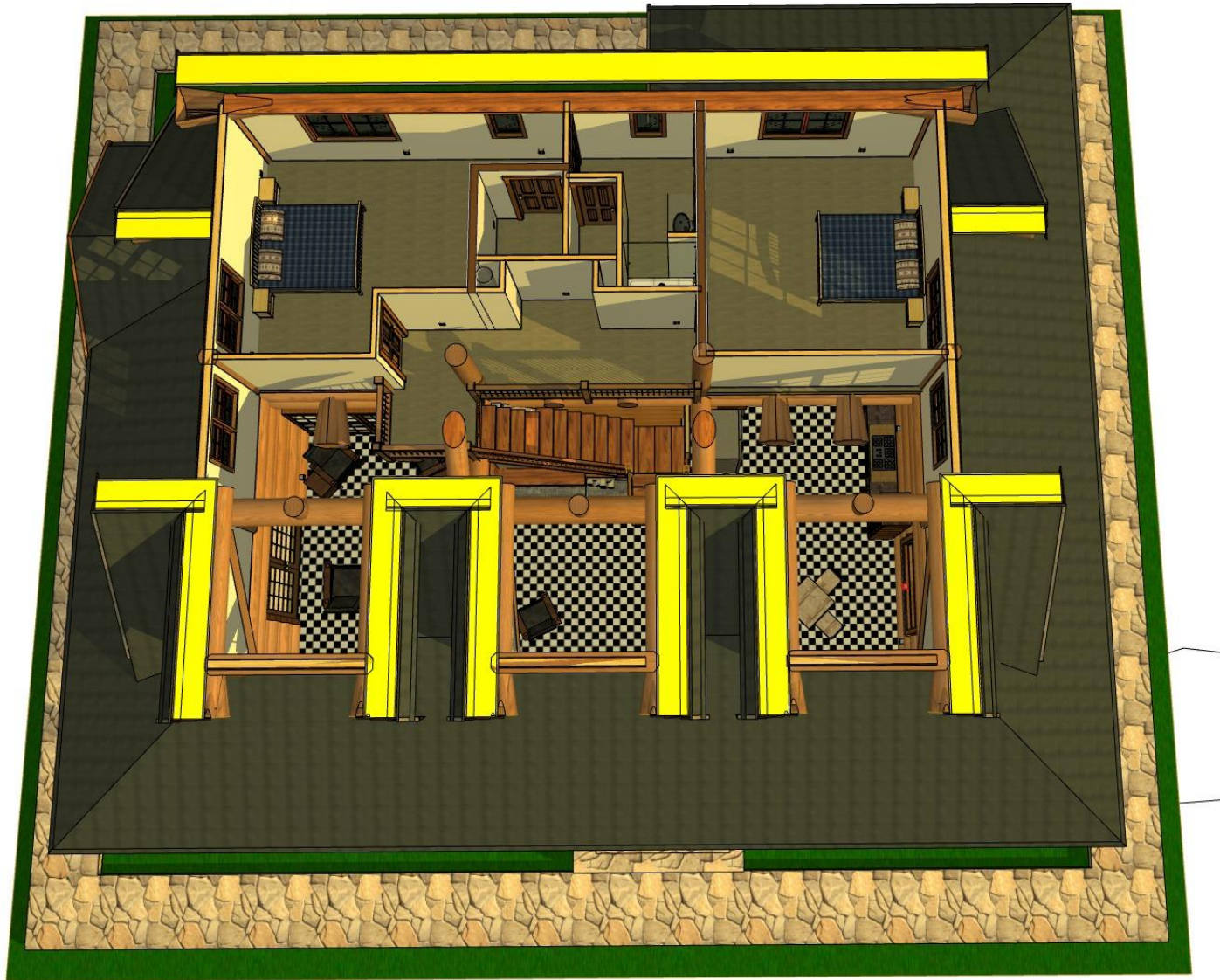


Portfolio 8x11

COPYRIGHT © 2020
THIS DOCUMENT IS PROPERTY OF
LAKE COUNTRY LOG HOMES 2009 LTD.
REPRODUCTION OF ALL OR
ANY PORTION OF THIS DOCUMENT
WITHOUT WRITTEN PERMISSION
IS ILLEGAL AND PUNISHABLE BY LAW.

ELK CREEK

UPPER FLOOR PLAN



SCALED TO PRINT ON 8 1/2" X 11"

PO Box 295
Salmon Arm, British Columbia,
Canada V1E 4N3
Web: www.lakecountrylog.com
Phone: 250-836-3854
Fax: 250-836-3874



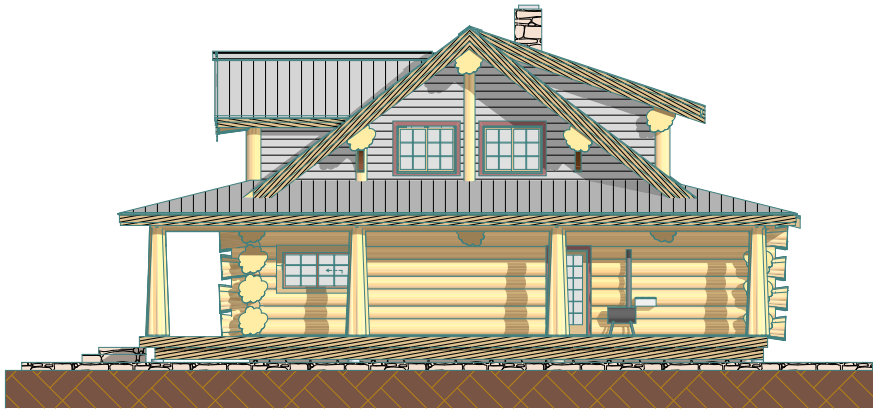
Portfolio 8x11

COPYRIGHT © 2020
THIS DOCUMENT IS PROPERTY OF
LAKE COUNTRY LOG HOMES 2009 LTD.
REPRODUCTION OF ALL OR
ANY PORTION OF THIS DOCUMENT
WITHOUT WRITTEN PERMISSION
IS ILLEGAL AND PUNISHABLE BY LAW.

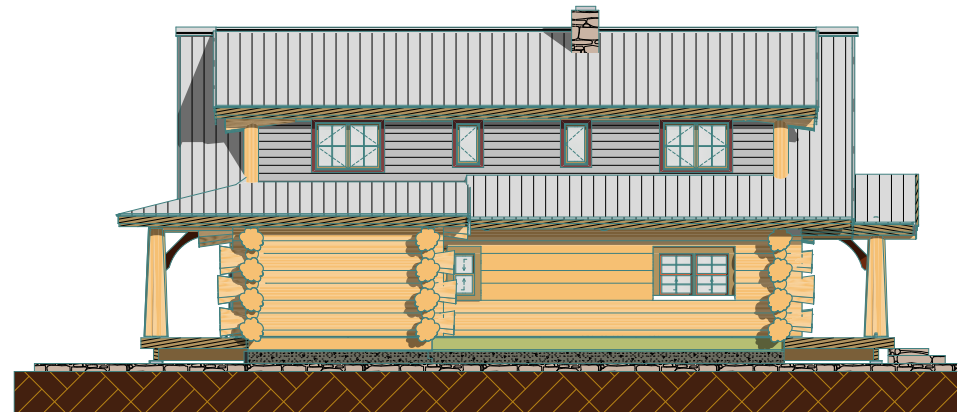
ELK CREEK

UPPER FLOOR PLAN 3D

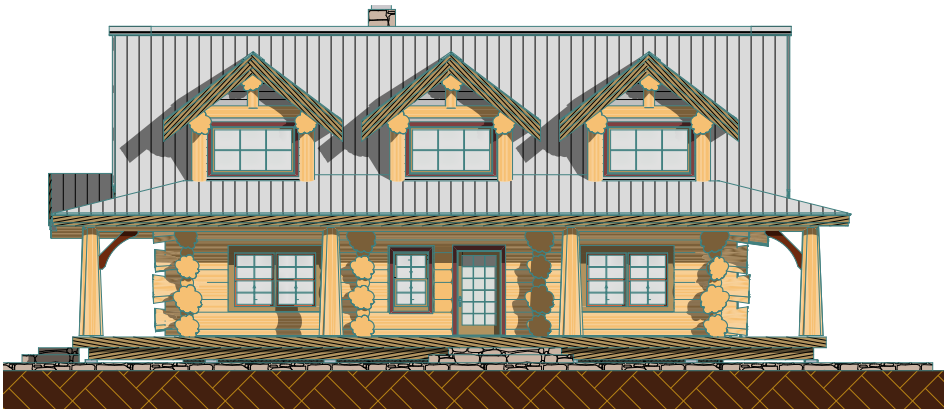
5



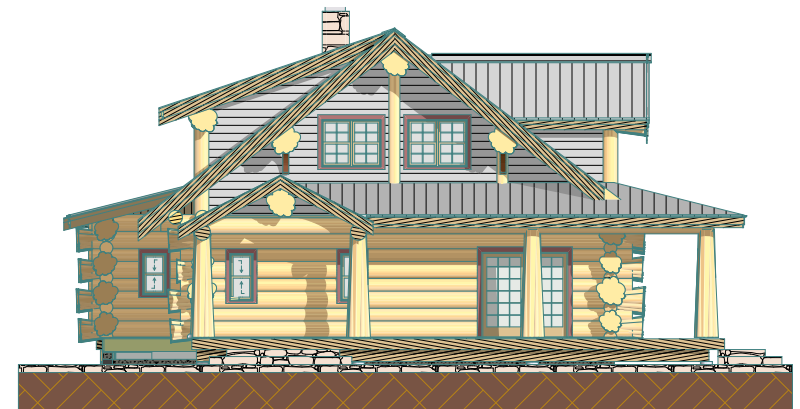
South



East



West



North

SCALED TO PRINT ON 8 1/2" X 11"

PO Box 295
Salmon Arm, British Columbia,
Canada V1E 4N3
Web: www.lakecountrylog.com
Phone: 250-836-3854
Fax: 250-836-3874

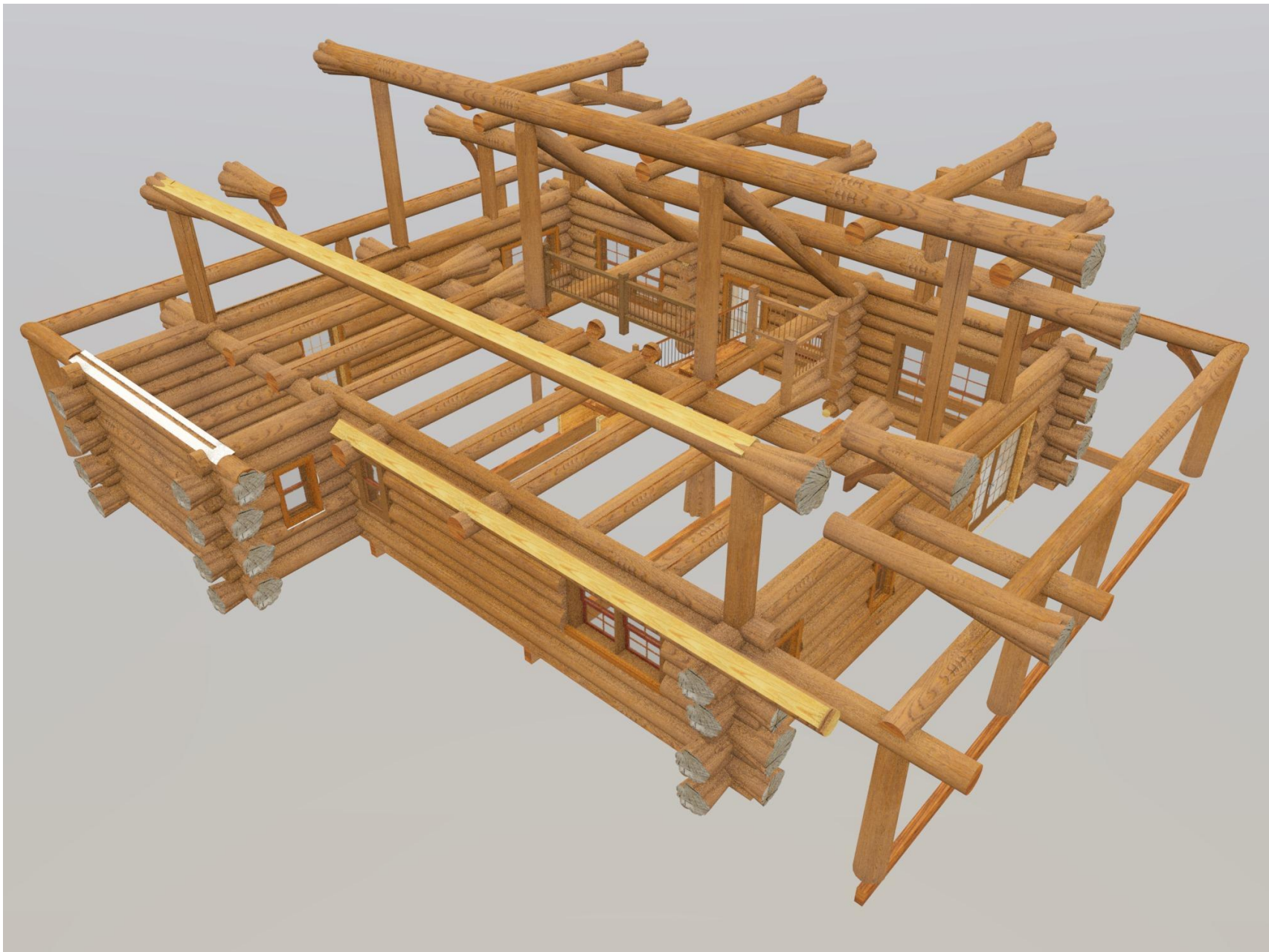


Portfolio 8x11

COPYRIGHT © 2020
THIS DOCUMENT IS PROPERTY OF
LAKE COUNTRY LOG HOMES 2009 LTD.
REPRODUCTION OF ALL OR
ANY PORTION OF THIS DOCUMENT
WITHOUT WRITTEN PERMISSION
IS ILLEGAL AND PUNISHABLE BY LAW.

ELK CREEK
ELEVATIONS

6



SCALED TO PRINT ON 8 1/2" X 11"

PO Box 295
Salmon Arm, British Columbia,
Canada V1E 4N3
Web: www.lakecountrylog.com
Phone: 250-836-3854
Fax: 250-836-3874



Portfolio 8x11

COPYRIGHT © 2020
THIS DOCUMENT IS PROPERTY OF
LAKE COUNTRY LOG HOMES 2009 LTD.
REPRODUCTION OF ALL OR
ANY PORTION OF THIS DOCUMENT
WITHOUT WRITTEN PERMISSION
IS ILLEGAL AND PUNISHABLE BY LAW.

ELK CREEK

LOG SHELL

7