



PO Box 295
Salmon Arm, British Columbia,
Canada V1E 4N3
Web: www.lakecountrylog.com
Phone: 250-836-3854
Fax: 250-836-3874

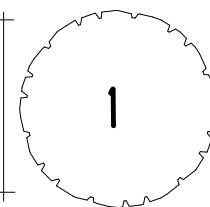


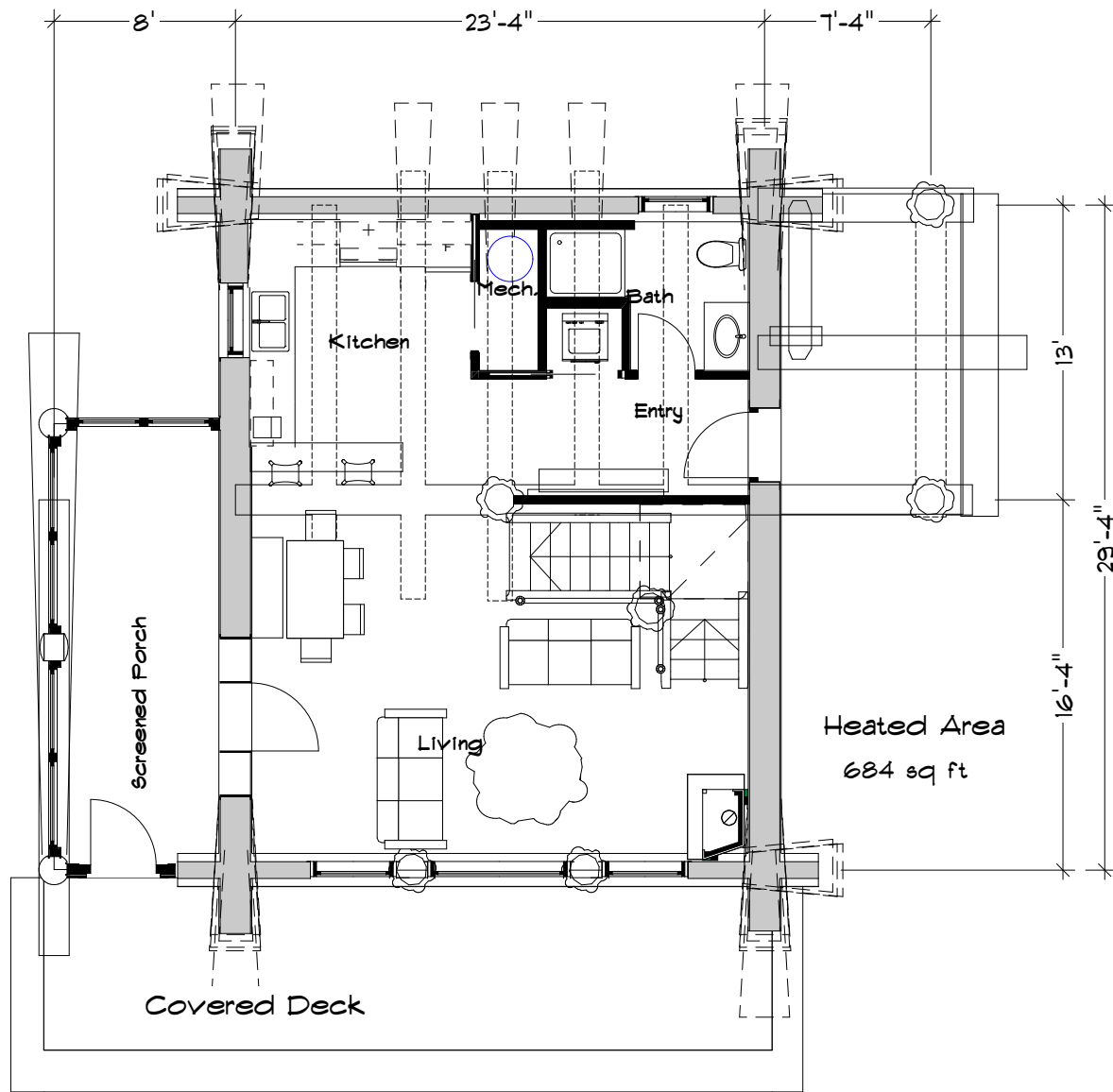
Stock Plan

COPYRIGHT © 2020
THIS DOCUMENT IS PROPERTY OF
LAKE COUNTRY LOG HOMES 2009 LTD.
REPRODUCTION OF ALL OR
ANY PORTION OF THIS DOCUMENT
WITHOUT WRITTEN PERMISSION
IS ILLEGAL AND PUNISHABLE BY LAW.

TETTEGOUCHE

COVER PAGE





PO Box 295
Salmon Arm, British Columbia,
Canada V1E 4N3
Web: www.lakecountrylog.com
Phone: 250-836-3854
Fax: 250-836-3874



Stock Plan

COPYRIGHT © 2020
THIS DOCUMENT IS PROPERTY OF
LAKE COUNTRY LOG HOMES 2009 LTD.
REPRODUCTION OF ALL OR
ANY PORTION OF THIS DOCUMENT
WITHOUT WRITTEN PERMISSION
IS ILLEGAL AND PUNISHABLE BY LAW.

TETTEGOUCHE MAIN FLOOR PLAN



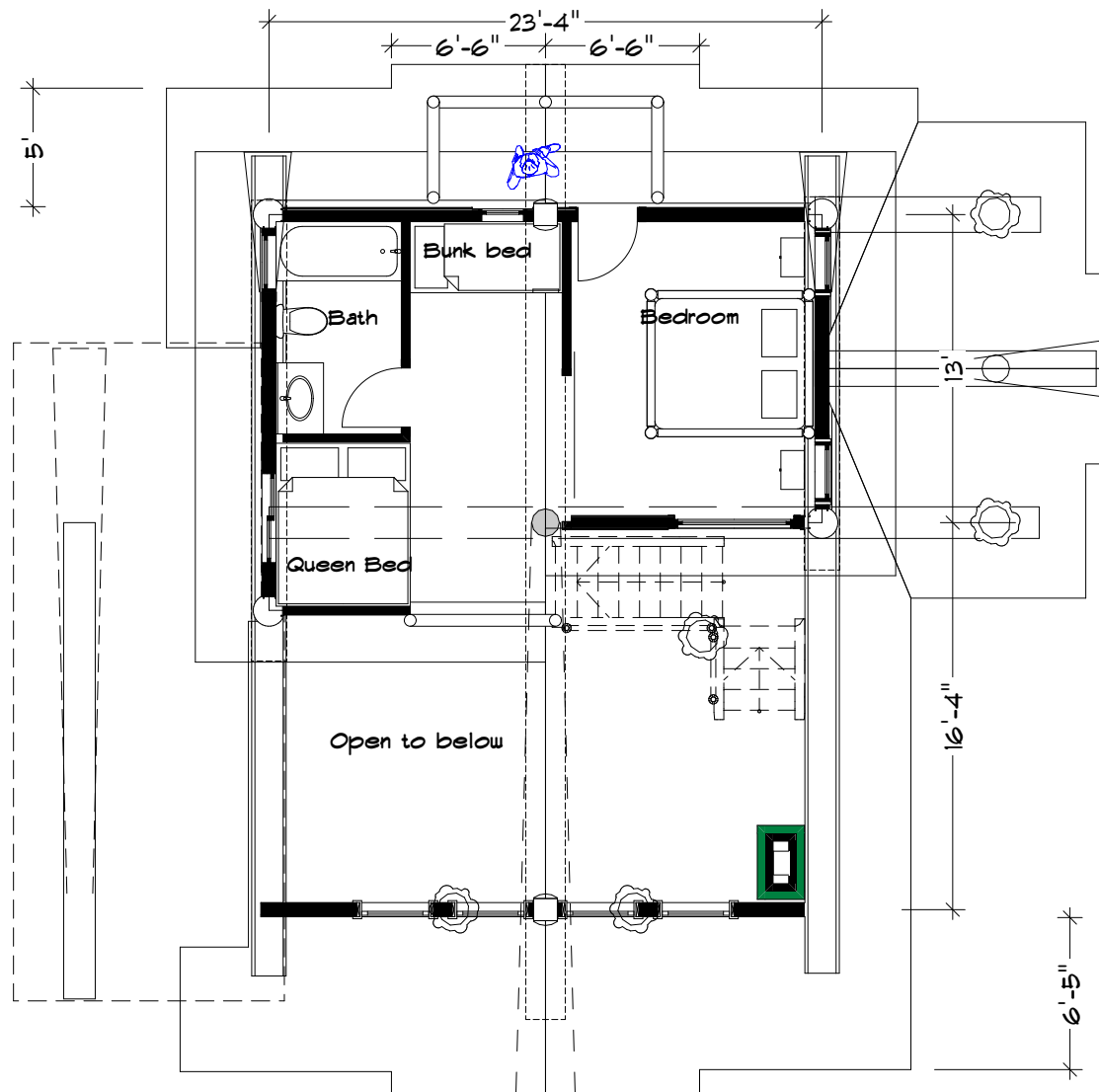
PO Box 295
 Salmon Arm, British Columbia,
 Canada V1E 4N3
 Web: www.lakecountrylog.com
 Phone: 250-836-3854
 Fax: 250-836-3874



Stock Plan

COPYRIGHT © 2020
 THIS DOCUMENT IS PROPERTY OF
 LAKE COUNTRY LOG HOMES 2009 LTD.
 REPRODUCTION OF ALL OR
 ANY PORTION OF THIS DOCUMENT
 WITHOUT WRITTEN PERMISSION
 IS ILLEGAL AND PUNISHABLE BY LAW.

TETTEGOUCHE MAIN FLOOR PLAN



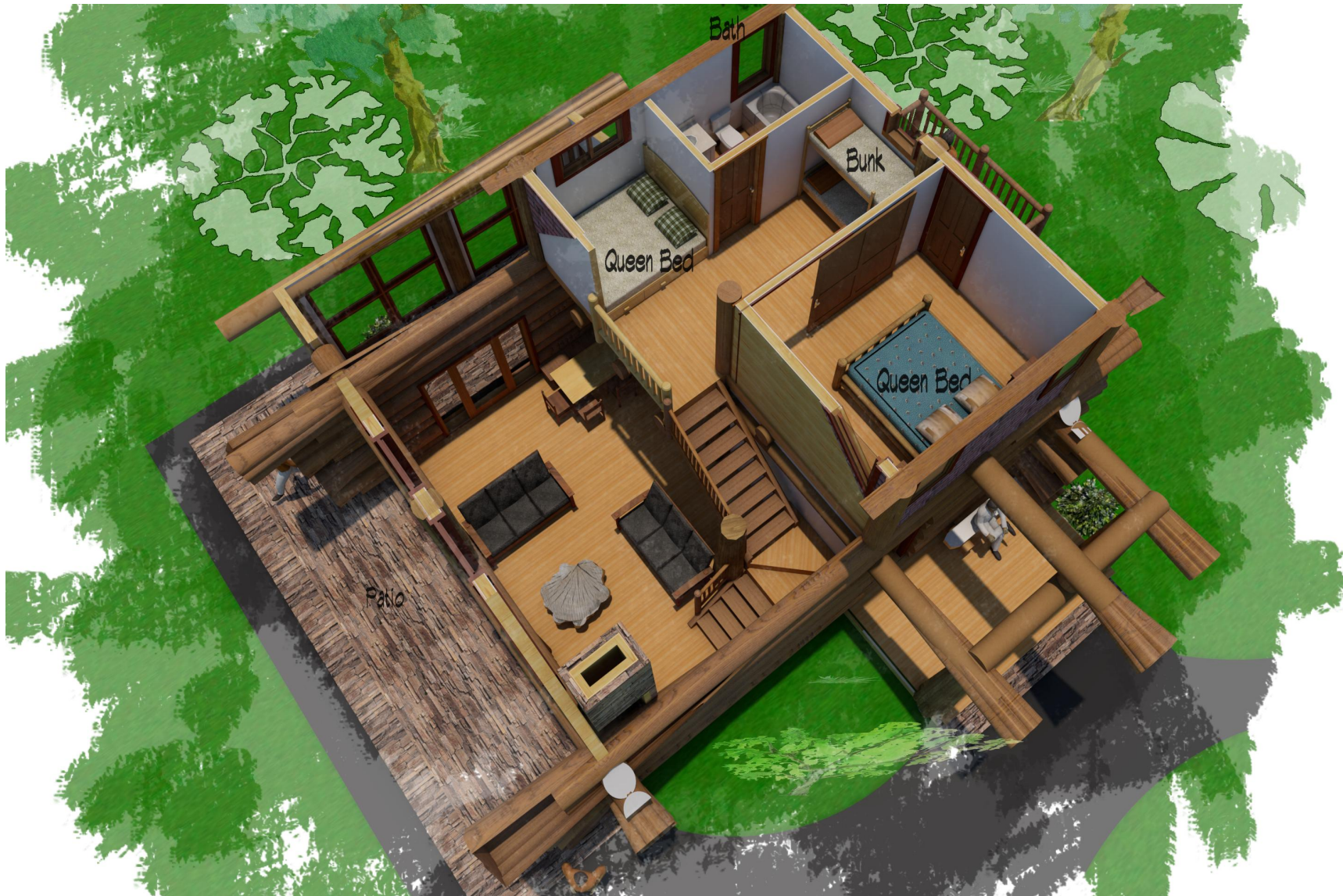
PO Box 295
 Salmon Arm, British Columbia,
 Canada V1E 4N3
 Web: www.lakecountrylog.com
 Phone: 250-836-3854
 Fax: 250-836-3874



Stock Plan

COPYRIGHT © 2020
 THIS DOCUMENT IS PROPERTY OF
 LAKE COUNTRY LOG HOMES 2009 LTD.
 REPRODUCTION OF ALL OR
 ANY PORTION OF THIS DOCUMENT
 WITHOUT WRITTEN PERMISSION
 IS ILLEGAL AND PUNISHABLE BY LAW.

TETTEGOUCHE UPPER FLOOR PLAN



PO Box 295
Salmon Arm, British Columbia,
Canada V1E 4N3
Web: www.lakecountrylog.com
Phone: 250-836-3854
Fax: 250-836-3874



Stock Plan

COPYRIGHT © 2020
THIS DOCUMENT IS PROPERTY OF
LAKE COUNTRY LOG HOMES 2009 LTD.
REPRODUCTION OF ALL OR
ANY PORTION OF THIS DOCUMENT
WITHOUT WRITTEN PERMISSION
IS ILLEGAL AND PUNISHABLE BY LAW.

TETTEGOUCHE

ROOFING OFF

1

North



3/23/2020
STOCK PLAN

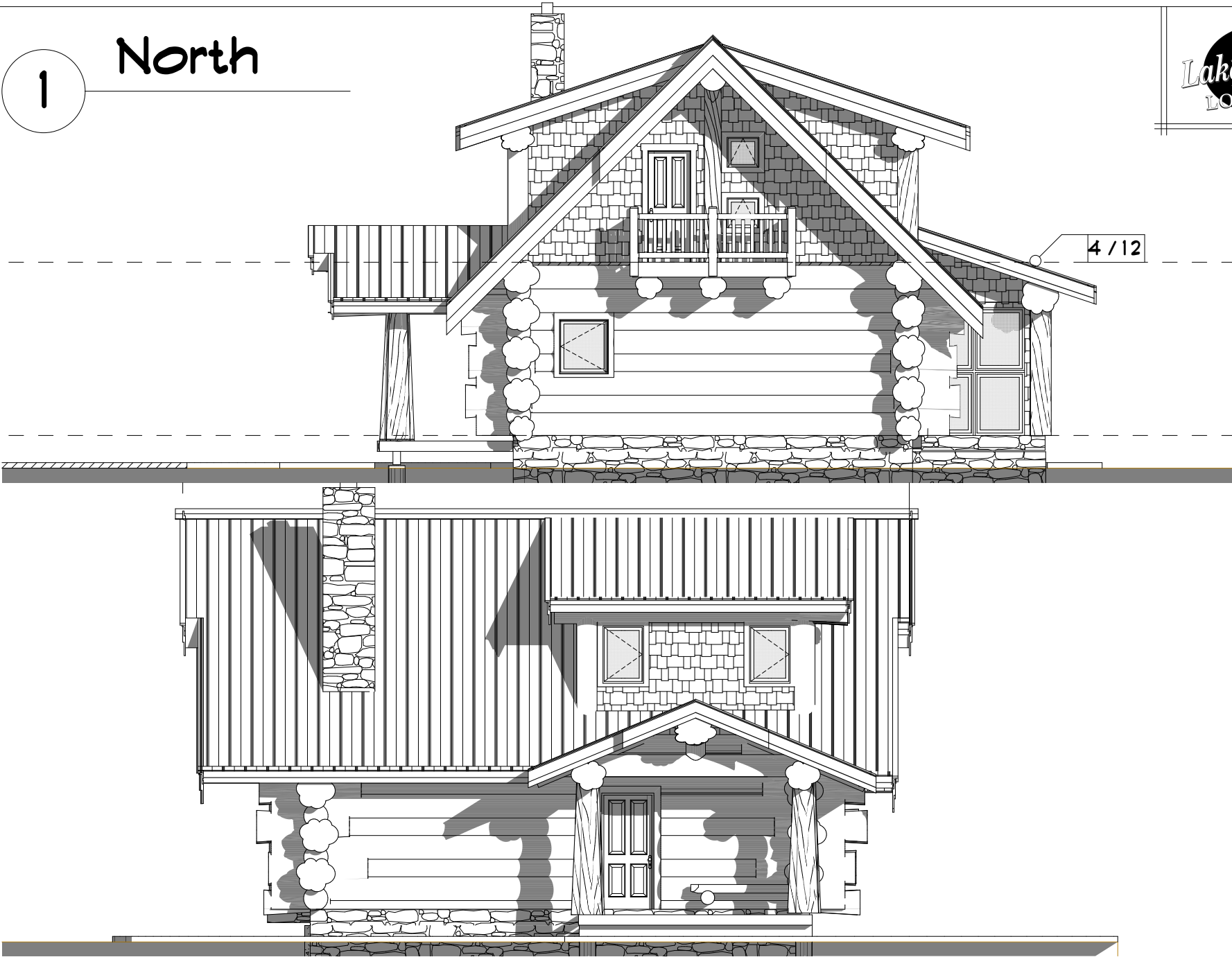
4 / 12

TETTEGOUCHE
ELEVATIONS

THIS DOCUMENT IS PROPERTY OF
LAKE COUNTRY LOG HOMES 2009 LTD.
REPRODUCTION OF ALL OR
ANY PORTION OF THIS DOCUMENT
WITHOUT WRITTEN PERMISSION
IS ILLEGAL AND PUNISHABLE BY LAW.
COPYRIGHT © 2020

1/8" = 1'-0"

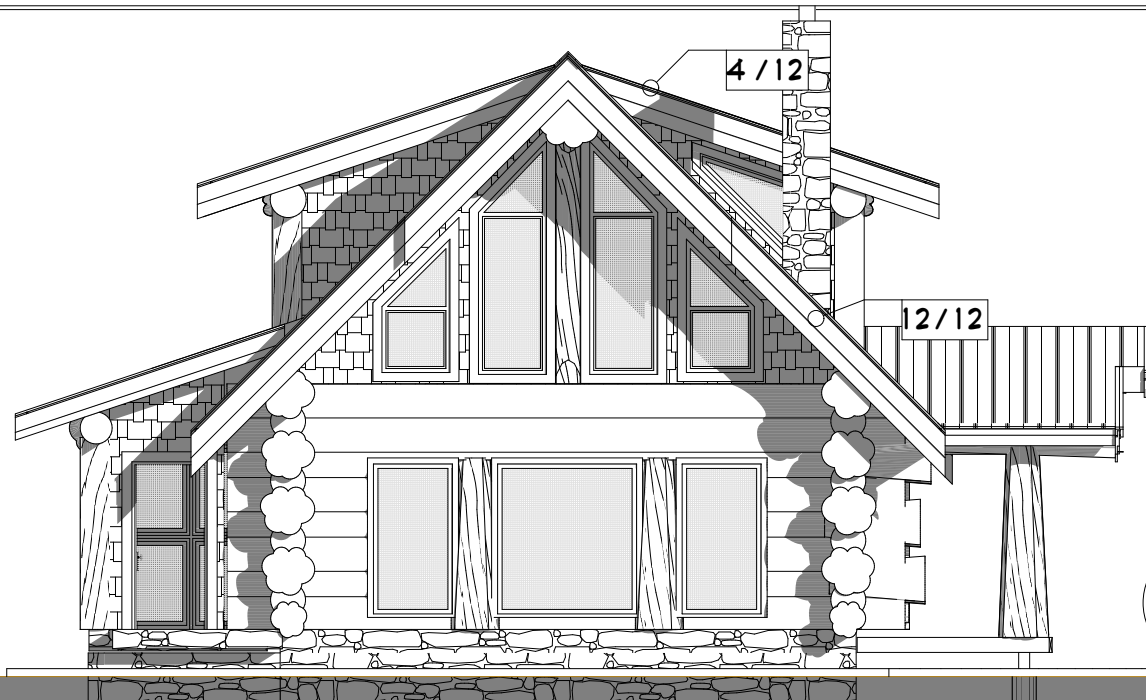
6



1

East

3/23/2020
STOCK PLAN



1

South



1

West

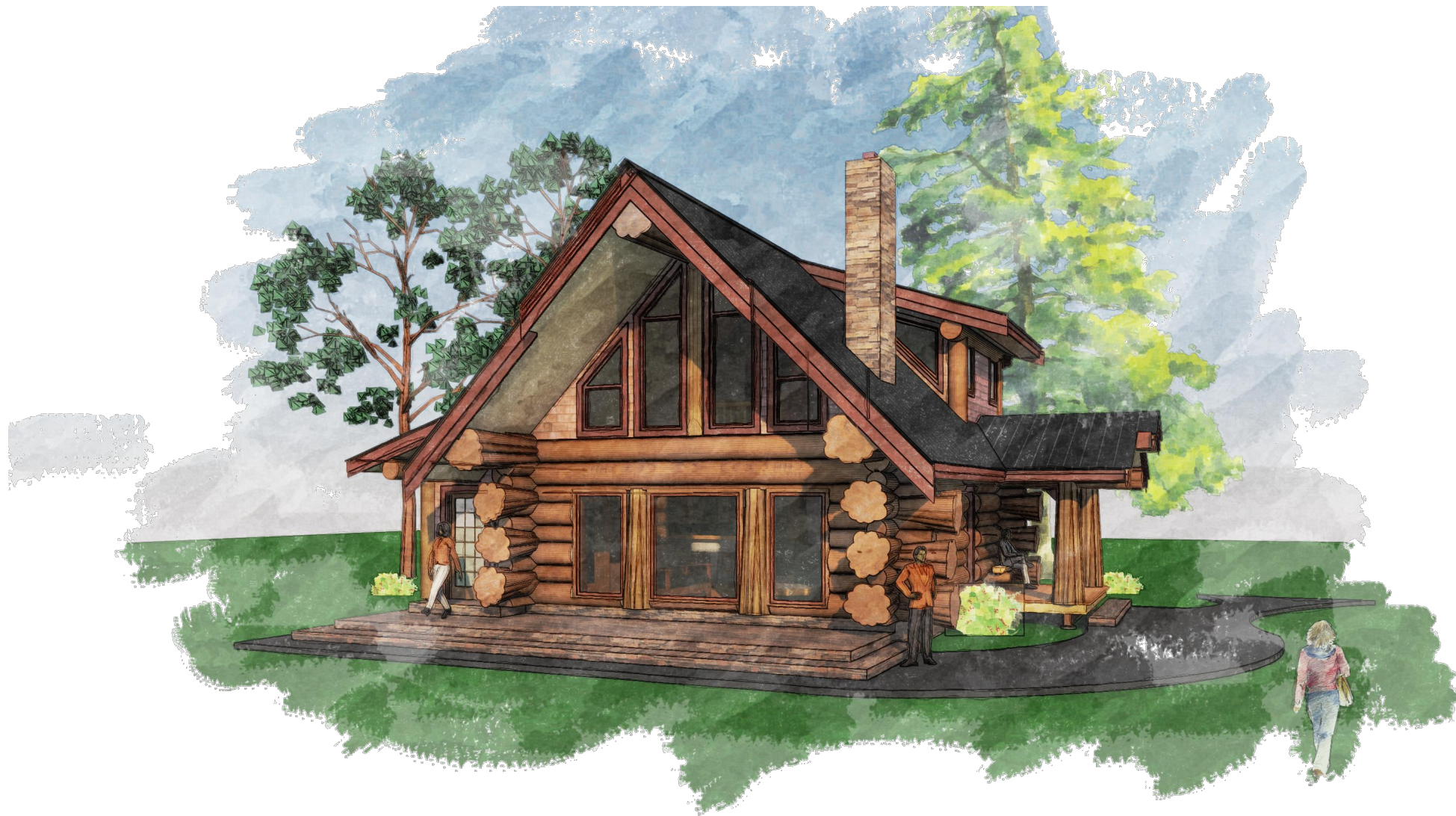
**TETTEGOUCHE
ELEVATIONS**

THIS DOCUMENT IS PROPERTY OF
LAKE COUNTRY LOG HOMES 2009 LTD.
REPRODUCTION OF ALL OR
ANY PORTION OF THIS DOCUMENT
WITHOUT WRITTEN PERMISSION
IS ILLEGAL AND PUNISHABLE BY LAW.

COPYRIGHT © 2020

1/8" = 1'-0"

1



PO Box 295
Salmon Arm, British Columbia,
Canada V1E 4N3
Web: www.lakecountrylog.com
Phone: 250-836-3854
Fax: 250-836-3874



Stock Plan

COPYRIGHT © 2020
THIS DOCUMENT IS PROPERTY OF
LAKE COUNTRY LOG HOMES 2009 LTD.
REPRODUCTION OF ALL OR
ANY PORTION OF THIS DOCUMENT
WITHOUT WRITTEN PERMISSION
IS ILLEGAL AND PUNISHABLE BY LAW.

TETTEGOUCHE PERSPECTIVE 1



PO Box 295
Salmon Arm, British Columbia,
Canada V1E 4N3
Web: www.lakecountrylog.com
Phone: 250-836-3854
Fax: 250-836-3874



Stock Plan

COPYRIGHT © 2020
THIS DOCUMENT IS PROPERTY OF
LAKE COUNTRY LOG HOMES 2009 LTD.
REPRODUCTION OF ALL OR
ANY PORTION OF THIS DOCUMENT
WITHOUT WRITTEN PERMISSION
IS ILLEGAL AND PUNISHABLE BY LAW.

TETTEGOUCHE PERSPECTIVE 2