



SCALED TO PRINT ON 8 1/2" X 11"

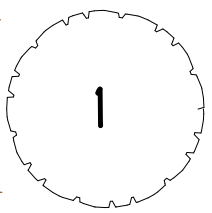
PO Box 295
 Salmon Arm, British Columbia,
 Canada V1E 4N3
 Web: www.lakecountrylog.com
 Phone: 250-836-3854
 Fax: 250-836-3874



Stock Plans

COPYRIGHT © 2020
 THIS DOCUMENT IS PROPERTY OF
 LAKE COUNTRY LOG HOMES 2009 LTD.
 REPRODUCTION OF ALL OR
 ANY PORTION OF THIS DOCUMENT
 WITHOUT WRITTEN PERMISSION
 IS ILLEGAL AND PUNISHABLE BY LAW.

TOFINO
PERSPECTIVE VIEW FRONT





SCALED TO PRINT ON 8 1/2" X 11"

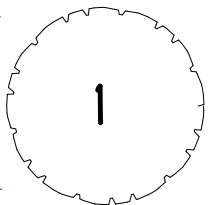
PO Box 295
 Salmon Arm, British Columbia,
 Canada V1E 4N3
 Web: www.lakecountrylog.com
 Phone: 250-836-3854
 Fax: 250-836-3874

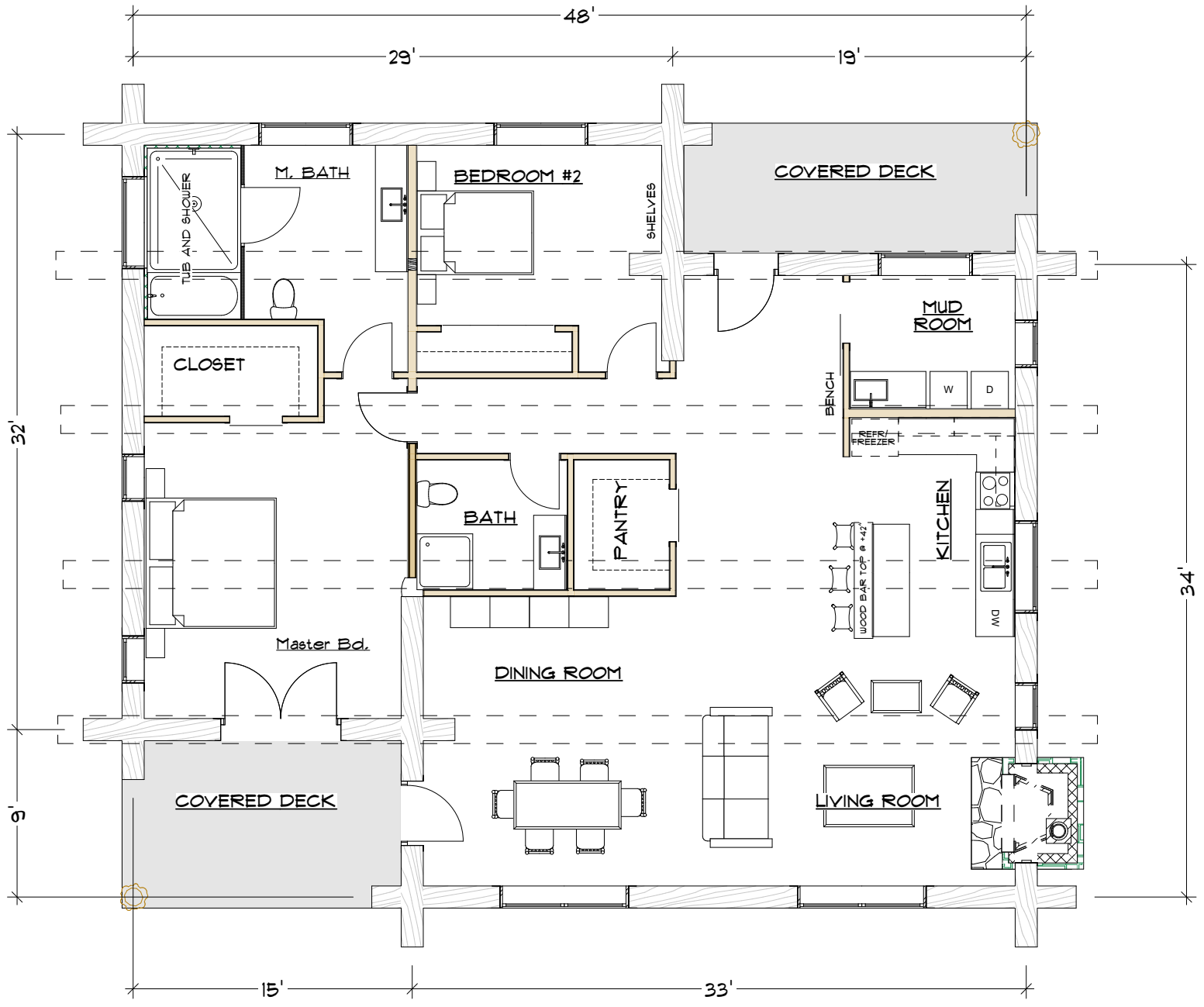


Stock Plans

COPYRIGHT © 2020
 THIS DOCUMENT IS PROPERTY OF
 LAKE COUNTRY LOG HOMES 2009 LTD.
 REPRODUCTION OF ALL OR
 ANY PORTION OF THIS DOCUMENT
 WITHOUT WRITTEN PERMISSION
 IS ILLEGAL AND PUNISHABLE BY LAW.

TOFINO
PERSPECTIVE VIEW BACK





SCALED TO PRINT ON 8 1/2" X 11"

PO Box 295
 Salmon Arm, British Columbia,
 Canada V1E 4N3
 Web: www.lakecountrylog.com
 Phone: 250-836-3854
 Fax: 250-836-3874

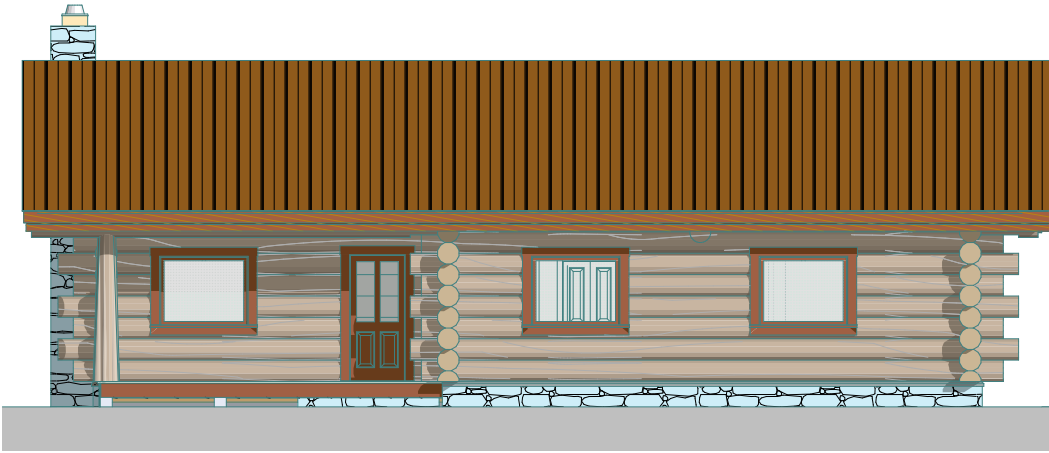


Stock Plans

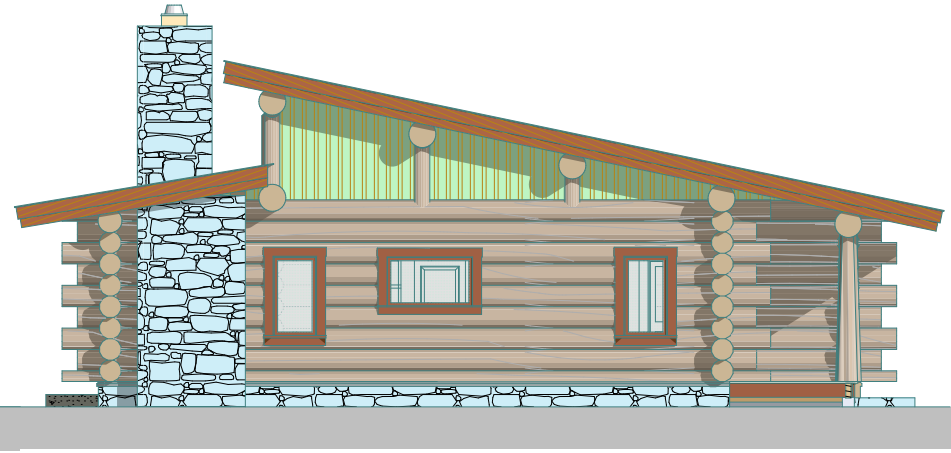
COPYRIGHT © 2020
 THIS DOCUMENT IS PROPERTY OF
 LAKE COUNTRY LOG HOMES 2009 LTD.
 REPRODUCTION OF ALL OR
 ANY PORTION OF THIS DOCUMENT
 WITHOUT WRITTEN PERMISSION
 IS ILLEGAL AND PUNISHABLE BY LAW.

TOFINO
MAIN FLOOR PLAN

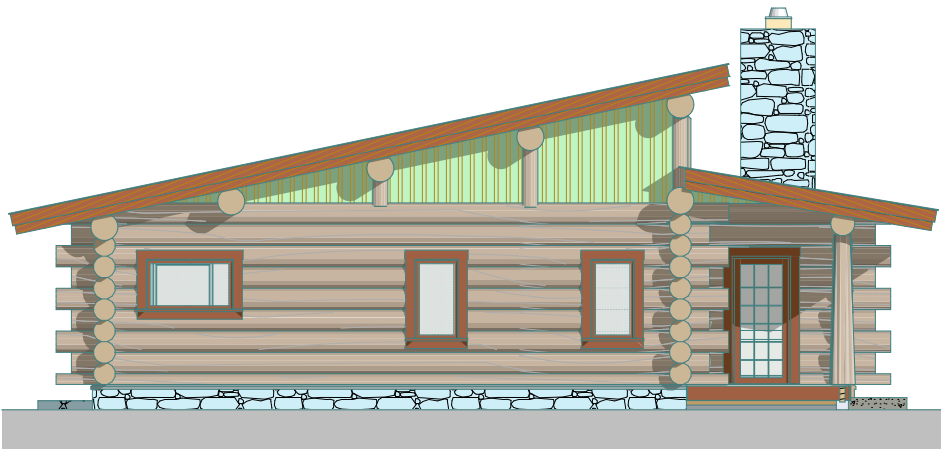




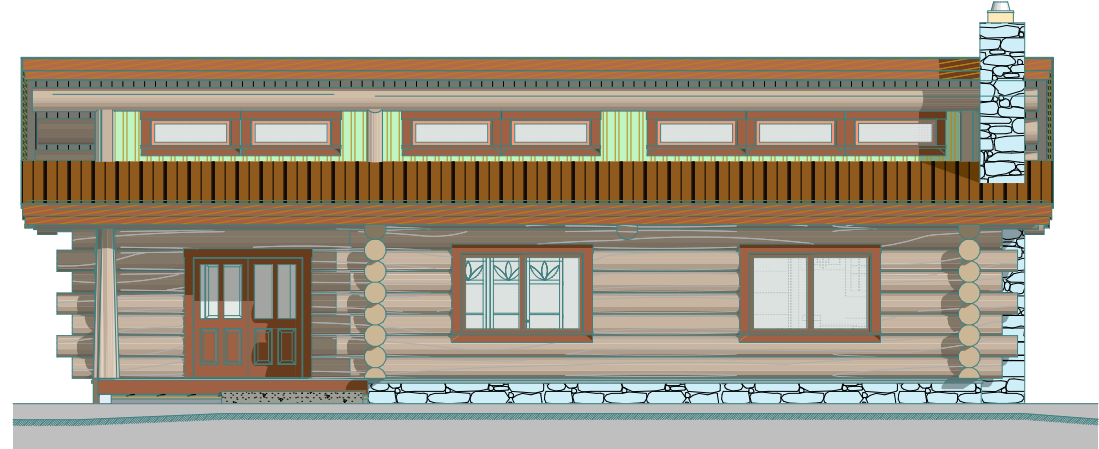
North



East



West



South

SCALED TO PRINT ON 8 1/2" X 11"

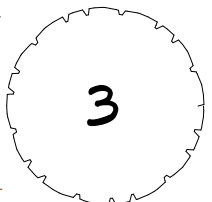
PO Box 295
 Salmon Arm, British Columbia,
 Canada V1E 4N3
 Web: www.lakecountrylog.com
 Phone: 250-836-3854
 Fax: 250-836-3874



Stock Plans

COPYRIGHT © 2020
 THIS DOCUMENT IS PROPERTY OF
 LAKE COUNTRY LOG HOMES 2009 LTD.
 REPRODUCTION OF ALL OR
 ANY PORTION OF THIS DOCUMENT
 WITHOUT WRITTEN PERMISSION
 IS ILLEGAL AND PUNISHABLE BY LAW.

TOFINO
ELEVATIONS





SCALED TO PRINT ON 8 1/2" X 11"

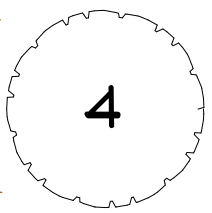
PO Box 295
 Salmon Arm, British Columbia,
 Canada V1E 4N3
 Web: www.lakecountrylog.com
 Phone: 250-836-3854
 Fax: 250-836-3874



Stock Plans

COPYRIGHT © 2020
 THIS DOCUMENT IS PROPERTY OF
 LAKE COUNTRY LOG HOMES 2009 LTD.
 REPRODUCTION OF ALL OR
 ANY PORTION OF THIS DOCUMENT
 WITHOUT WRITTEN PERMISSION
 IS ILLEGAL AND PUNISHABLE BY LAW.

TOFINO
INTERIOR RENDERINGS 1





SCALED TO PRINT ON 8 1/2" X 11"

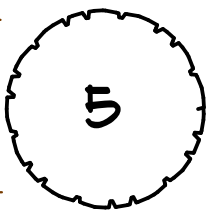
PO Box 295
 Salmon Arm, British Columbia,
 Canada V1E 4N3
 Web: www.lakecountrylog.com
 Phone: 250-836-3854
 Fax: 250-836-3874



Stock Plans

COPYRIGHT © 2020
 THIS DOCUMENT IS PROPERTY OF
 LAKE COUNTRY LOG HOMES 2009 LTD.
 REPRODUCTION OF ALL OR
 ANY PORTION OF THIS DOCUMENT
 WITHOUT WRITTEN PERMISSION
 IS ILLEGAL AND PUNISHABLE BY LAW.

TOFINO
INTERIOR RENDERINGS 2





SCALED TO PRINT ON 8 1/2" X 11"

PO Box 295
 Salmon Arm, British Columbia,
 Canada V1E 4N3
 Web: www.lakecountrylog.com
 Phone: 250-836-3854
 Fax: 250-836-3874



Stock Plans

COPYRIGHT © 2020
 THIS DOCUMENT IS PROPERTY OF
 LAKE COUNTRY LOG HOMES 2009 LTD.
 REPRODUCTION OF ALL OR
 ANY PORTION OF THIS DOCUMENT
 WITHOUT WRITTEN PERMISSION
 IS ILLEGAL AND PUNISHABLE BY LAW.

TOFINO

INTERIOR RENDERINGS 3

