

11/8/2018

STOCK PLANS

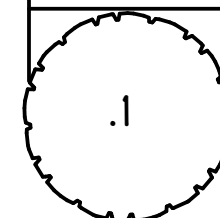


YUKON
PERSPECTIVE

Yukon - 28x36'

SCALE: 1:3.18

1:3.18



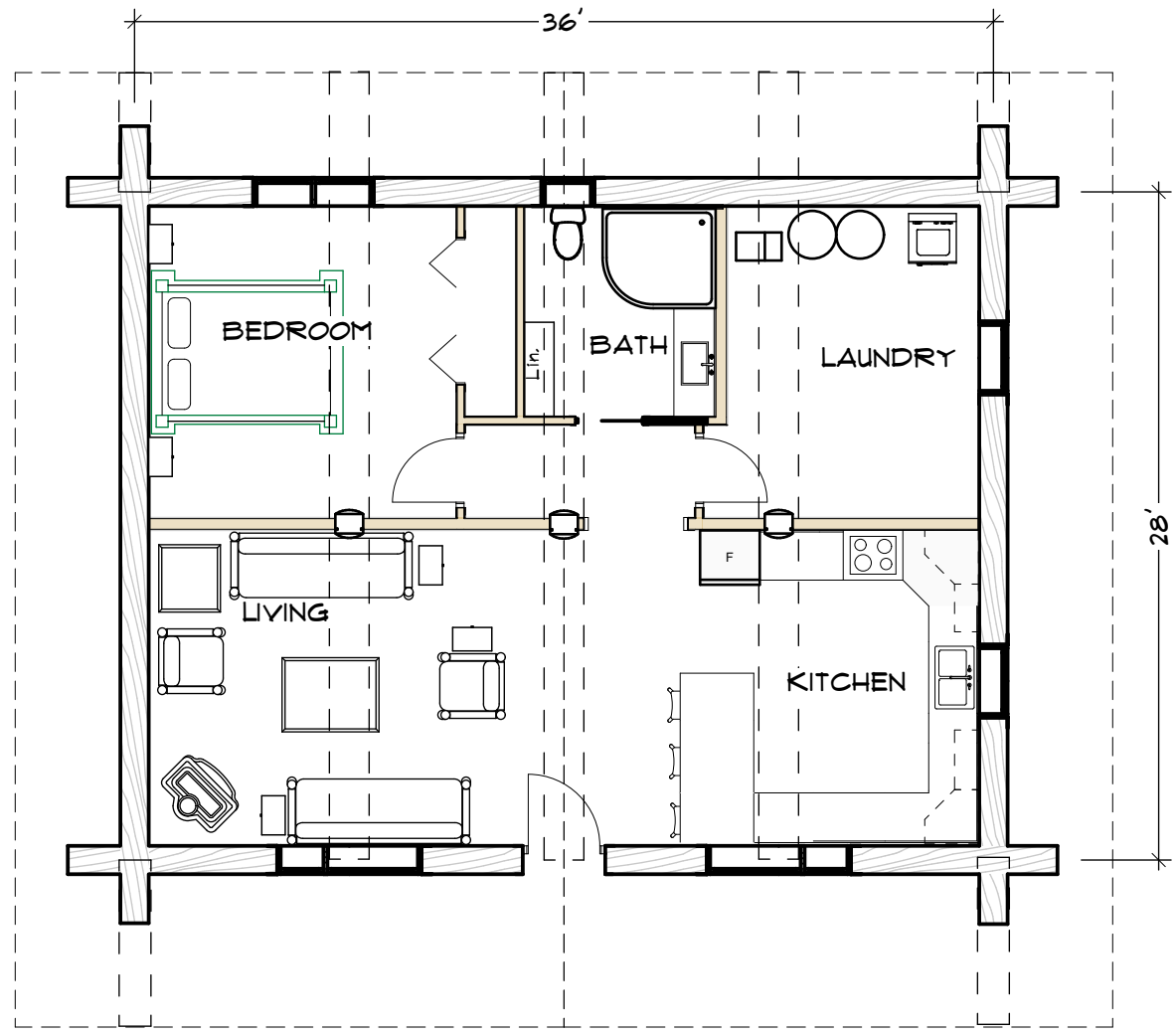
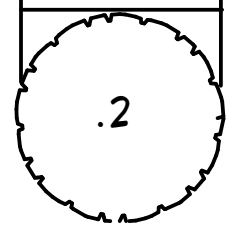
11/8/2018

STOCK PLANS

YUKON

FLOOR PLAN

1/8" = 1'-0"



1,007 SQ FT

1

Main Floor Plan

SCALE: 1/8" = 1'-0"

11/8/2018

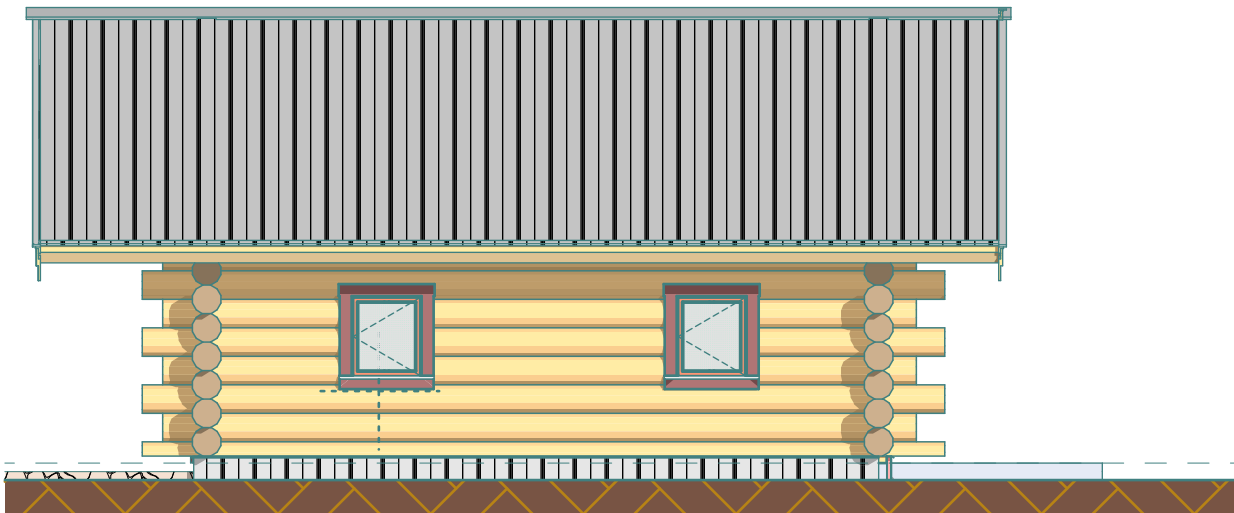
STOCK PLANS



1

North

SCALE: 1/8" = 1'-0"



2

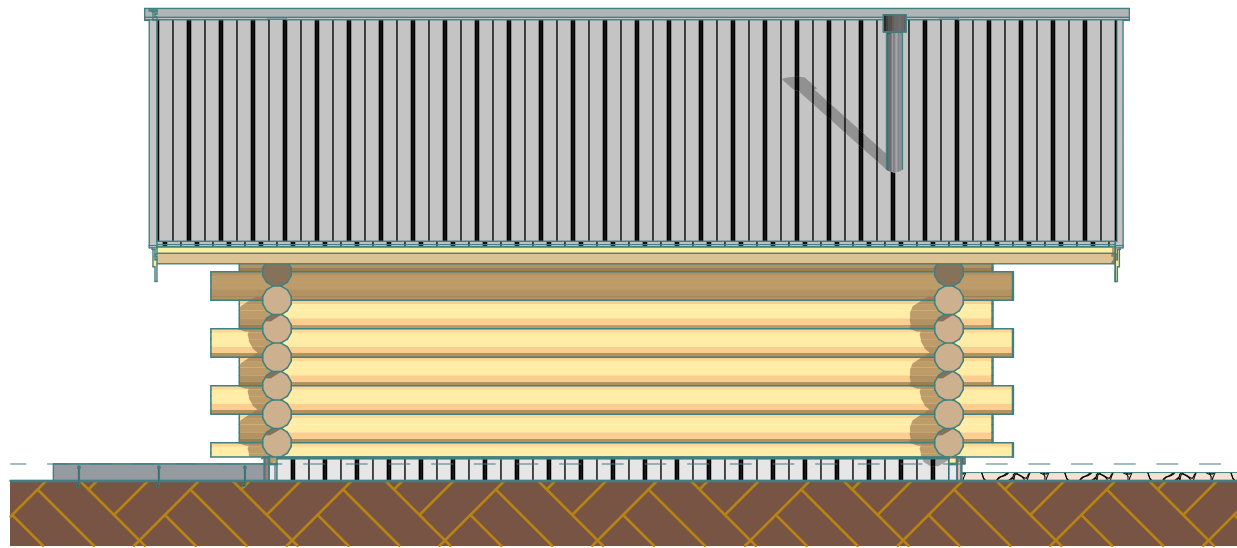
East

SCALE: 1/8" = 1'-0"

YUKON
ELEVATIONS

1/8" = 1'-0"

3



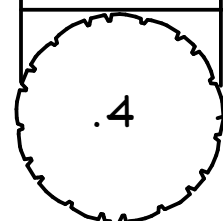
3 West

SCALE: 1/8" = 1'-0"



4 South

SCALE: 1/8" = 1'-0"

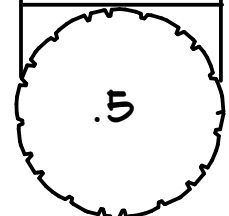


11/8/2018

STOCK PLANS

YUKON
LOG WORK

1:1.74



Log work

SCALE: 1:1.74